

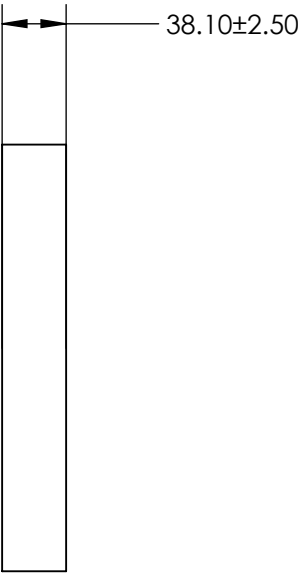
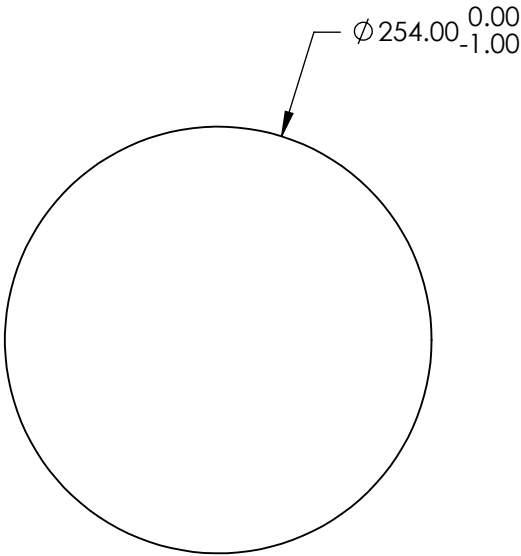
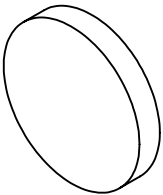
NOTES:

- 1. SUBSTRATE:
ZERODUR®
- 2. SURFACE S2 TO BE PARALLEL WITH SURFACE S1 TO <3 ARCMIN
- 3. COATING (APPLY ACROSS CLEAR APERTURE)
S1: Protected Aluminum (400-2000nm)
R(avg) >85% @ 400 - 700nm
R(avg) >90% @ 400 - 2000nm
S2: NONE

4. ARROW ON EDGE POINTING TOWARD SURFACE S1

5. FINE GRIND SURFACE

6. ROHS COMPLIANT



**FOR INFORMATION ONLY:
DO NOT MANUFACTURE
PARTS TO THIS DRAWING**

SPECIFICATIONS SUBJECT TO CHANGE WITHOUT NOTICE
DIMENSIONS ARE FOR REFERENCE ONLY

	S1	S2
SHAPE	PLANO	PLANO
SURFACE FLATNESS	$\lambda/10$	N/A
SURFACE QUALITY	60-40	COMMERICAL POLISH
CLEAR APERTURE	$\varnothing 228.60$	$\varnothing 228.60$
BEVEL	PROTECTED AS NEEDED	PROTECTED AS NEEDED

 Edmund Optics®			
THIRD ANGLE PROJECTION 		TITLE	10" Dia. Protected Aluminum, $\lambda/10$ Flat ZERODUR®
ALL DIMS IN	mm	DWG NO	71108522
			SHEET 2 OF 20