

62-274 2/3" Format C-Mount Fisheye Lens 1.8mm FL



*Photograph is a similar model.

FIXED

Fixed Focal

Fish-Eye
185°

Fish-Eye

5 Mega

For Megapixel
Camera

MANUAL

Manual Iris

C-mt

C Mount

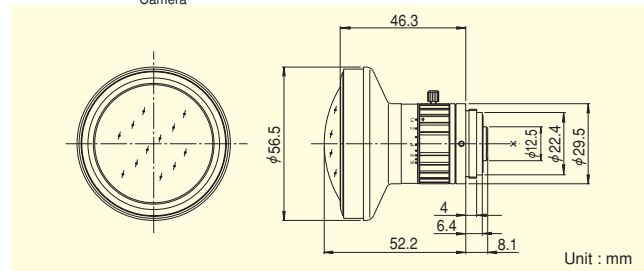
METAL

Metal Mount

F1.4

Wide Aperture Rate

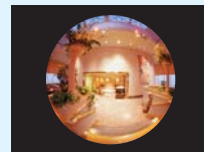
- High-resolution design, providing support for up to 5 megapixel camera resolution.
- Super wide angle of 185 degrees that eliminates dead angles and enables effective, wide-area surveillance.
- Designed with the f-theta system, most suited for uniform displaying of images. Allows high-quality image display, partial enlargement, and conversion to ordinary-looking images to be performed easily with imaging software.



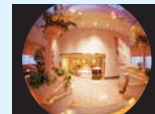
Focal Length (mm)		1.8
Iris Range		F1.4 ~ F16
Operation	Focus	Fixed
	Iris	Manual
Angle Of View (H×V)	2/3"	185° × 185° (φ5.7mm)
	1/2"	185°01' × 154°08'
	1/3"	154°08' × 115°27'
Focusing Range (From Front Of The Lens) (m)		∞ ~ 0.1
Back Focal Distance (in air) (mm)		9.70
Exit Pupil Position (From Image Plane) (mm)		-61
Filter Thread (mm)		—
Mount		C
Mass (g)		135
Remarks		•With Metal Mount •With Locking Knob for Iris

[Fish-Eye Lens Image]

2/3"



1/2"



1/3"

