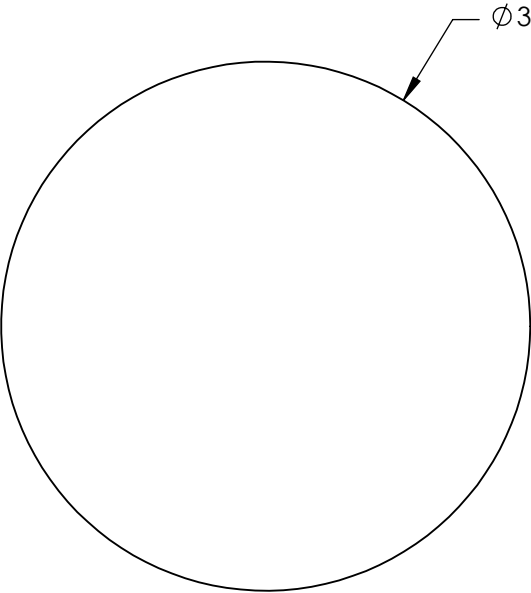
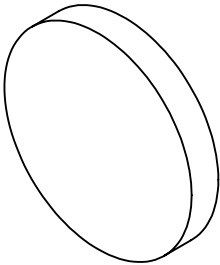


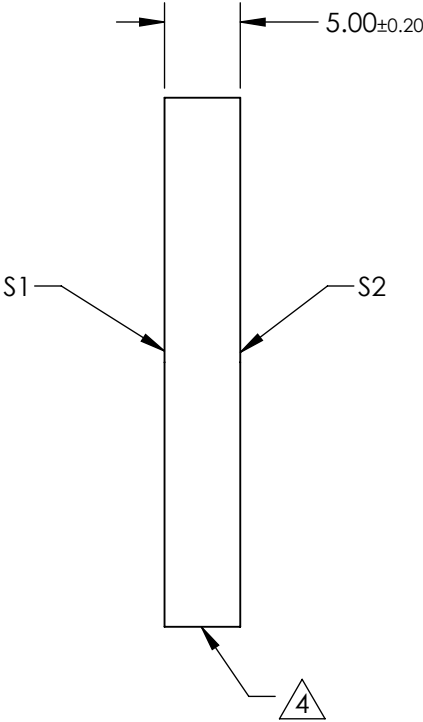
NOTES:

- 1. SUBSTRATE:
FUSED SILICA
- 2. SURFACE S2 TO BE PARALLEL WITH S1 TO 30 ARCSEC
- 3. COATING (APPLY ACROSS CLEAR APERTURE)
S1: UV ENHANCED SILVER (350 - 3,000nm)
R(AVG) >90% @ 350 - 400nm
R(AVG) >96% @ 400 - 3,000nm
- S2: NONE

- 4. FINE GRIND SURFACE
- 5. ROHS COMPLIANT



Ø 35.00^{0.00}_{-0.20}



**FOR INFORMATION ONLY:
DO NOT MANUFACTURE
PARTS TO THIS DRAWING**

SPECIFICATIONS SUBJECT TO CHANGE WITHOUT NOTICE
DIMENSIONS ARE FOR REFERENCE ONLY

	S1	S2
SHAPE	PLANO	PLANO
SURFACE QUALITY	20 - 10	COMMERCIAL POLISH
SURFACE FLATNESS	λ/10 (BEFORE COATING)	N/A
BEVEL	PROTECTED AS NEEDED	PROTECTED AS NEEDED



ALL DIMS IN mm

Edmund Optics®

TITLE

35mm Diameter UV Enhanced Silver Coated,
λ/10 Mirror

DWG NO

70239

SHEET
7 OF 9