

NOTES:

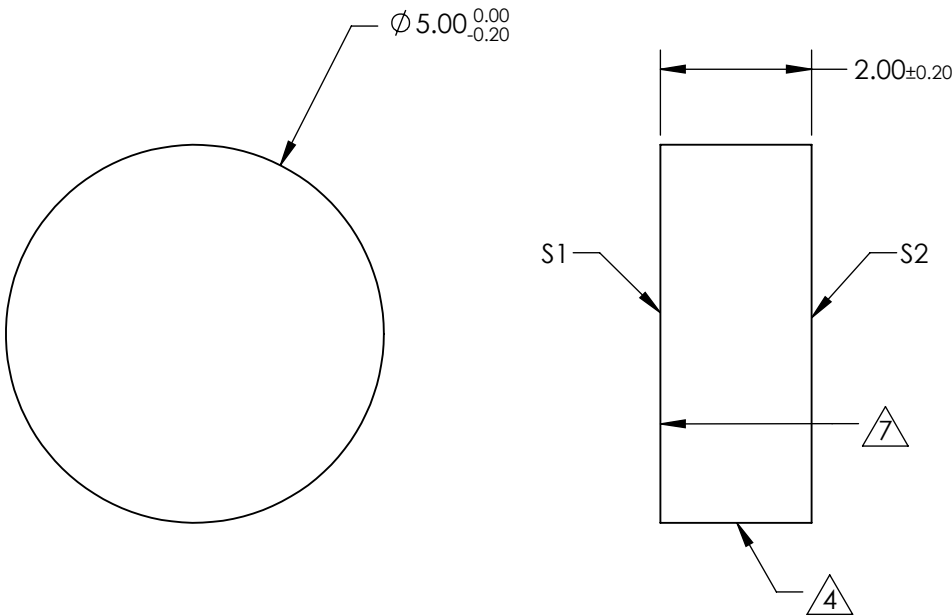
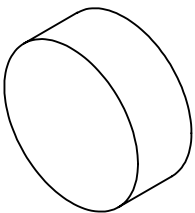
- 1. SUBSTRATE:
ZERODUR
- 2. S2 TO BE PARALLEL TO S1 TO WITHIN <30 ARCSEC
- 3. COATING (APPLY ACROSS CLEAR APERTURE)
S1: Protected Gold (700-10000nm)
Ravg >96% @ 700 - 2000nm
Ravg >96% @ 2000 - 10,000nm
S2: NONE

4. FINE GRIND SURFACE

- 5. CLEAR APERTURE AND COATING APERTURE ARE CENTERED ON SURFACE.
- 6. SURFACE QUALITY SPECIFICATIONS APPLY ACROSS CLEAR APERTURE


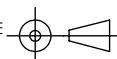
7. ARROW ON EDGE POINTS TOWARDS 1/10TH WAVE SURFACE S1

- 8. COEFFICIENT OF THERMAL EXPANSION CTE (10^-6/°C): 0.1
- 9. ROHS COMPLIANT



**FOR INFORMATION ONLY:
DO NOT MANUFACTURE
PARTS TO THIS DRAWING**

SPECIFICATIONS SUBJECT TO CHANGE WITHOUT NOTICE
DIMENSIONS ARE FOR REFERENCE ONLY

	S1	S2	<div> Edmund Optics®</div>				
SHAPE	PLANO	PLANO					
SURFACE QUALITY	20 - 10	COMMERCIAL POLISH	<div><div>THIRD ANGLE PROJECTION</div></div>				
SURFACE FLATNESS	$\lambda/10$	N/A					
CLEAR APERTURE	$\varnothing 4.50$	N/A	<div>TITLE</div> <div>5mm Dia. Protected Gold Coated, $\lambda/10$ ZERODUR® Mirror</div>				
COATING APERTURE	$\varnothing 4.50$	N/A					
BEVEL	PROTECTED AS NEEDED	PROTECTED AS NEEDED	<div>ALL DIMS IN</div>	<div>mm</div>	<div>DWG NO</div>	<div>17720</div>	<div>SHEET 3 OF 16</div>