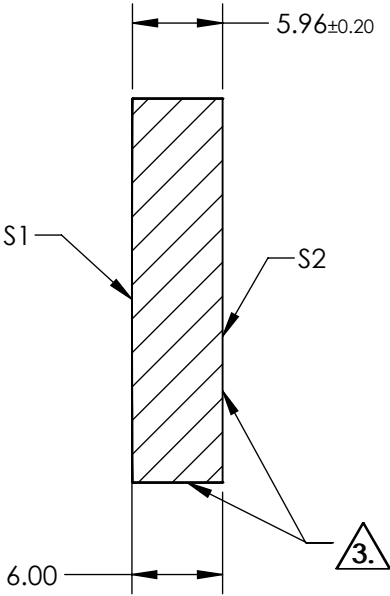
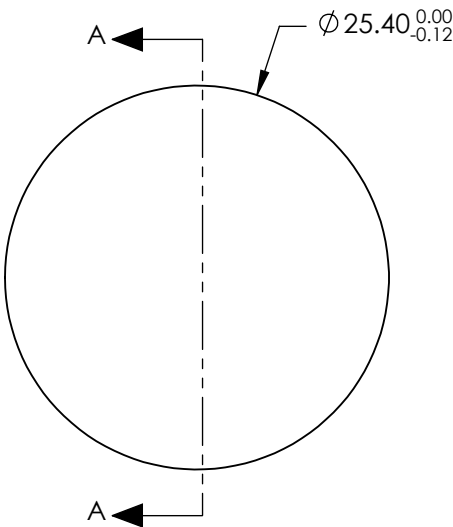


NOTES:

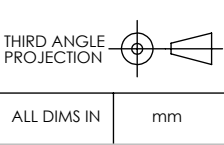
1. SUBSTRATE:
FUSED SILICA
2. COATING (APPLY ACROSS CLEAR APERTURE)
S1 & S2: NONE
3. COMMERCIAL POLISH
4. POWER, IRREGULARITY, AND SURFACE QUALITY
SPECIFICATIONS APPLY ACROSS CLEAR APERTURE
5. ROHS COMPLIANT



**FOR INFORMATION ONLY:
DO NOT MANUFACTURE
PARTS TO THIS DRAWING**

SPECIFICATIONS SUBJECT TO CHANGE WITHOUT NOTICE
DIMENSIONS ARE FOR REFERENCE ONLY

	S1	S2
SHAPE	CONVEX	PLANO
RADIUS	2000	INFINITY
SURFACE QUALITY	20-10	N/A
CLEAR APERTURE	Ø 22.86	N/A
IRREGULARITY AT 632.8nm	λ/10	N/A
BEVEL	PROTECTED AS NEEDED	PROTECTED AS NEEDED



Edmund Optics®

TITLE	25.4mm Dia. x 2000mm ROC, Uncoated, Convex Laser Mirror
DWG NO	27639
SHEET	18 OF 27