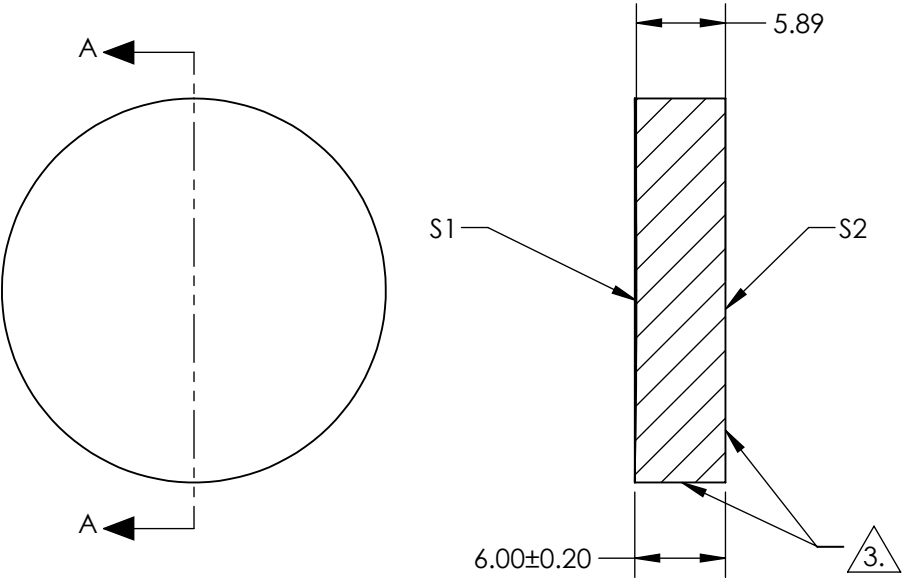



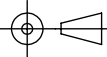
NOTES:

- 1. SUBSTRATE:  
FUSED SILICA
- 2. COATING (APPLY ACROSS CLEAR APERTURE)  
S1 & S2: NONE
- 3. FINE GRIND SURFACE
- 4. POWER, IRREGULARITY, AND SURFACE QUALITY  
SPECIFICATIONS APPLY ACROSS CLEAR APERTURE
- 5. ROHS COMPLIANT



**FOR INFORMATION ONLY:  
DO NOT MANUFACTURE  
PARTS TO THIS DRAWING**

SPECIFICATIONS SUBJECT TO CHANGE WITHOUT NOTICE  
DIMENSIONS ARE FOR REFERENCE ONLY

	S1	S2	 <b>Edmund Optics®</b>			
SHAPE	CONCAVE	PLANO				
RADIUS	750	INFINITY				
SURFACE QUALITY	20-10	N/A				
CLEAR APERTURE	Ø 22.86	N/A	TITLE			
IRREGULARITY AT 632.8nm	λ/10	N/A				
BEVEL	PROTECTED AS NEEDED	PROTECTED AS NEEDED	ALL DIMS IN	mm	DWG NO	27578
					SHEET 5 OF 21	