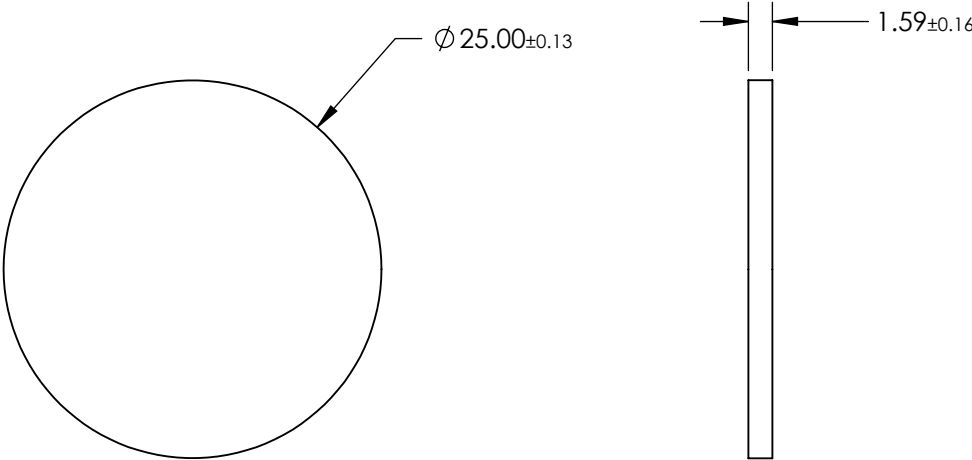


NOTES:

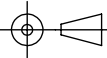
- 1. SUBSTRATE:
PMMA, PERMANENTLY LAMINATED TO PET FILM WITH HARD MICROSTRUCTURED POLYMER COATING
- 2. TYPE OF DIFFUSER: Elliptical Diffuser
- 3. DIFFUSING ANGLE (°): 0.3 x 60
- 4. OPERATING TEMPERATURE (°C): -34 to +70



SPECIFICATIONS SUBJECT TO CHANGE WITHOUT NOTICE
DIMENSIONS ARE FOR REFERENCE ONLY

**FOR INFORMATION ONLY:
DO NOT MANUFACTURE
PARTS TO THIS DRAWING**

EO[®] Edmund Optics[®]

THIRD ANGLE PROJECTION 		TITLE	25mm Dia., 0.3 x 60° Diffusion Angle, Elliptical Diffuser	
ALL DIMS IN	mm	DWG NO	28931	SHEET 1 OF 1