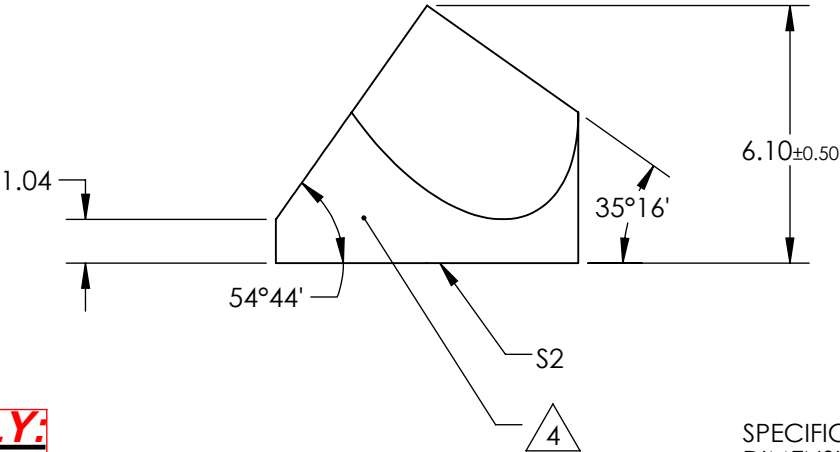
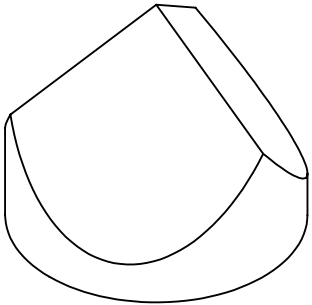
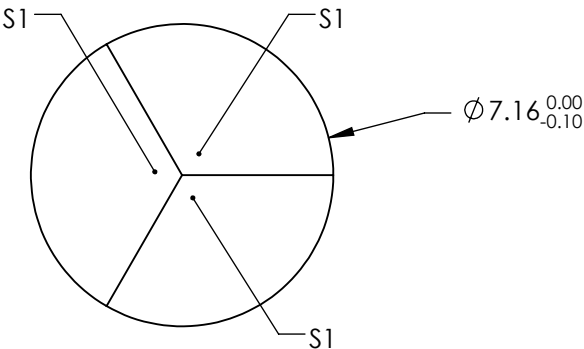


NOTES:

- 1. SUBSTRATE:  
N-BK7
- 2. INCIDENT AND REFLECTED BEAMS SHALL BE PARALLEL TO WITHIN 10 ARCSEC
- 3. COATING (APPLY ACROSS COATING APERTURE)  
S1: NONE

S2: NIR II  
R(AVG) ≤ 1.5% @ 750 - 800nm  
R(AVG) ≤ 1.0% @ 800 - 1550nm  
R(AVG) ≤ 0.7% @ 750 - 1550nm

- 4. FINE GRIND SURFACE
- 5. ROHS: COMPLIANT



**FOR INFORMATION ONLY:  
DO NOT MANUFACTURE  
PARTS TO THIS DRAWING**

SPECIFICATIONS SUBJECT TO CHANGE WITHOUT NOTICE  
DIMENSIONS ARE FOR REFERENCE ONLY

	S1 & S2
SURFACE FLATNESS	$\lambda/8$
SURFACE QUALITY	60-40
WAVELENGTH RANGE	750 - 1550
BEVEL	PROTECTED AS NEEDED



ALL DIMS IN

mm

**EO**® Edmund Optics®

TITLE

7.16mm NIR II Coated, Corner Cube Prism

DWG NO

26969

SHEET  
1 OF 1