

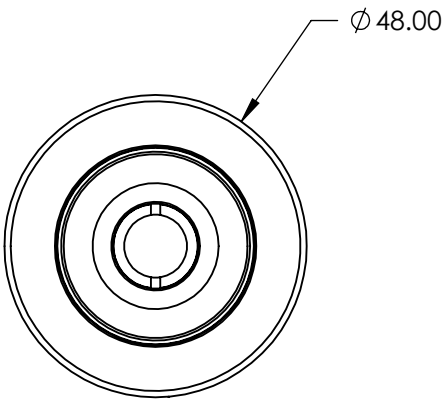
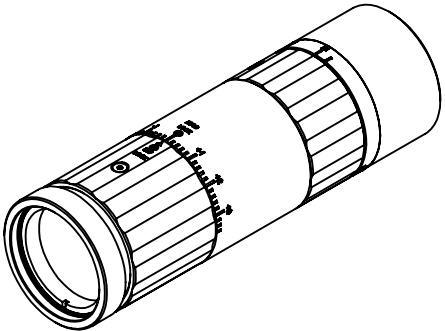
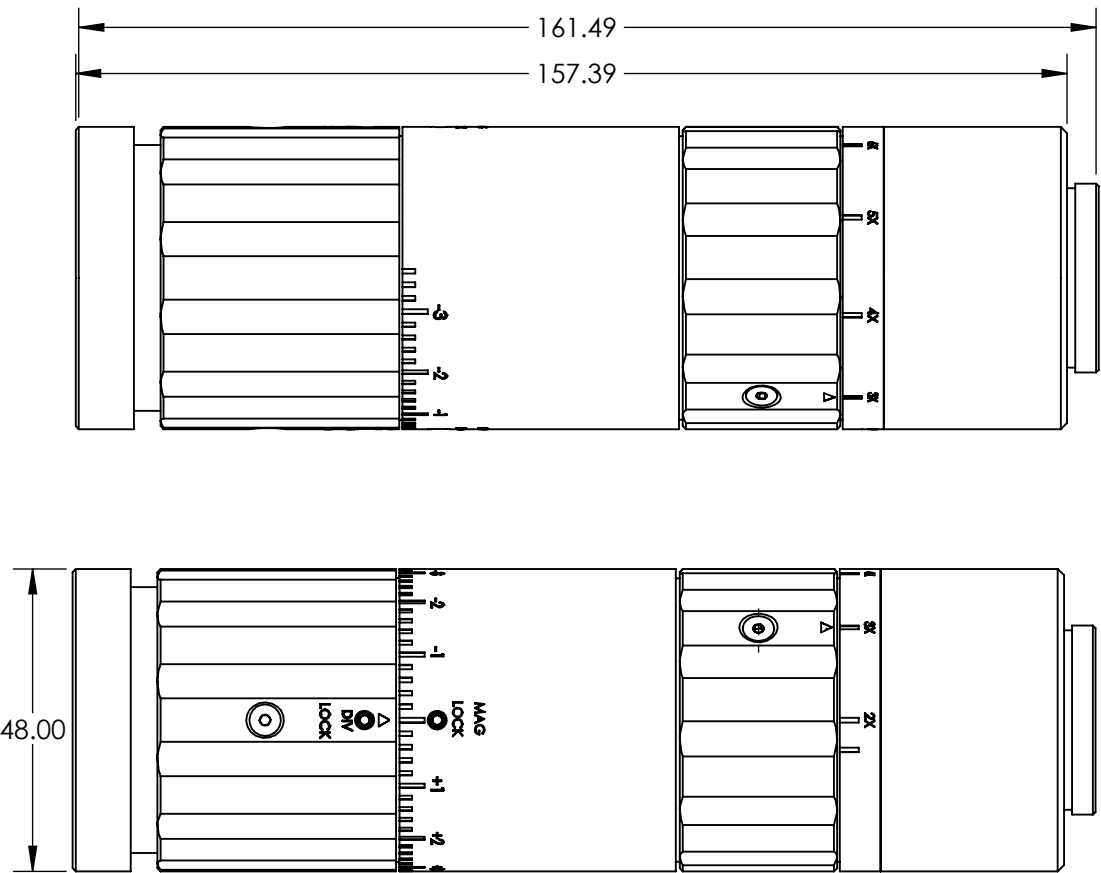
NOTES:

1. COATING (APPLY ACROSS CLEAR APERTURE)

LASER V-COAT

R(abs) 0.25% @ 532 nm

2. RoHS COMPLIANT

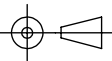


**FOR INFORMATION ONLY:
DO NOT MANUFACTURE
PARTS TO THIS DRAWING**

SPECIFICATIONS SUBJECT TO CHANGE WITHOUT NOTICE
DIMENSIONS ARE FOR REFERENCE ONLY

DAMAGE THRESHOLD, BY DESIGN	7.5 J/cm ² @ 20ns , 20 Hz @ 355 nm
DESIGNED WAVELENGTH DWL (nm)	355
TRANSMISSION	> 97.5 @ DWL
TRANSMITTED WAVEFRONT, P-V	< $\lambda/4$ for Input Beam 3mm (2X-6X) < $\lambda/4$ for Input Beam 2.5mm (2X-8X)

THIRD ANGLE
PROJECTION



ALL DIMS IN

mm



Edmund Optics®

TITLE

355nm 2X - 8X Gemma® Variable Beam
Expander

DWG NO

15546

SHEET
1 OF 1