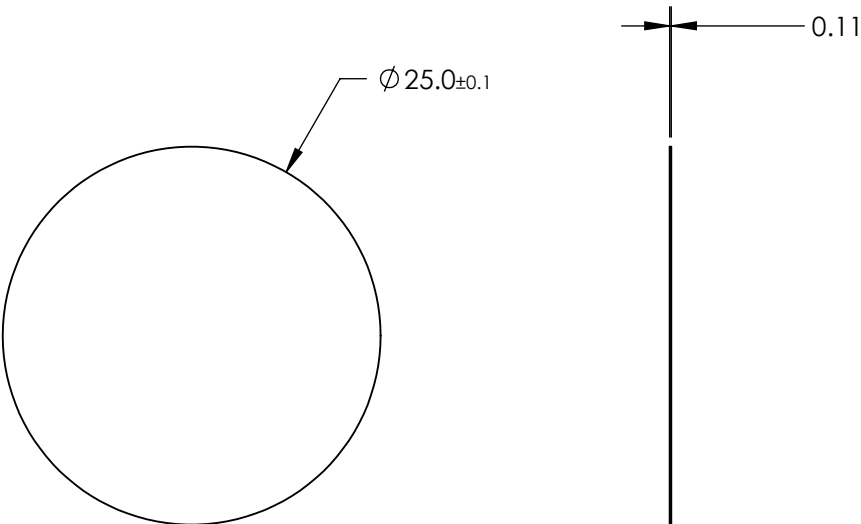


NOTES:

1. SUBSTRATE: CTA (CELLULOSE TRIACATE)
2. OPERATING TEMPERTURE: -20 to +70
3. WAVELENGTH RANGE: 400 - 700
4. EXTINCTION RATIO: 15,000:1 (NOMINAL)
5. TRANSMISSION,  $T_p$  (%): >42
6. ROHS COMPLIANT



**FOR INFORMATION ONLY:  
DO NOT MANUFACTURE  
PARTS TO THIS DRAWING**

SPECIFICATIONS SUBJECT TO CHANGE WITHOUT NOTICE  
DIMENSIONS ARE FOR REFERENCE ONLY

**EO**® Edmund Optics®

THIRD ANGLE PROJECTION 		TITLE	25mm Dia, Ultra High Contrast Linear Polarizing Film	
ALL DIMS IN	mm	DWG NO	26923	SHEET 2 OF 2