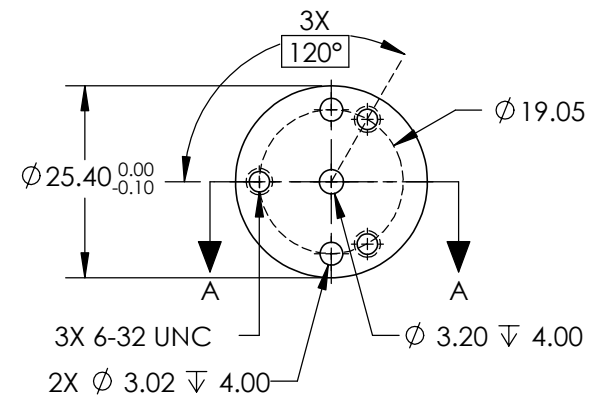
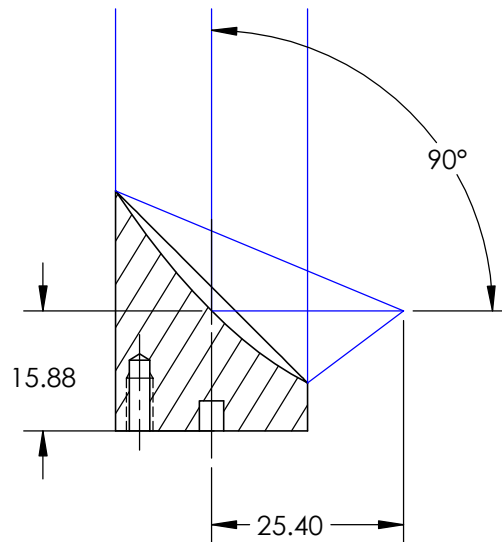
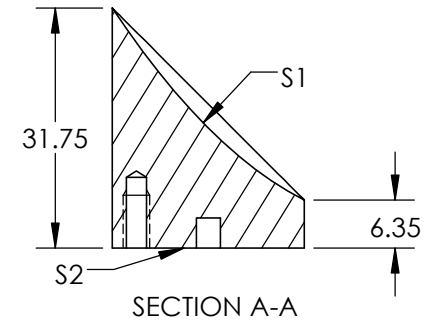
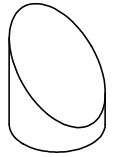


NOTES:

- SUBSTRATE MATERIAL:  
ALUMINUM
- FINISH (EXCEPT SURFACE S1 & S2):  
BLACK ANODIZED
- COATING (APPLY ACROSS CLEAR APERTURE)  
S1: DUV ENHANCED ALUMINUM (190-900nm)  
R(AVG)  $\geq 92\%$  @ 190 - 250nm  
R(AVG)  $\geq 83\%$  @ 250 - 900nm
- SURFACE ROUGHNESS:  $< 50 \text{ \AA RMS}$
- FOCAL LENGTH TOLERANCE:  $\pm 1\%$
- ROHS COMPLIANT

**FOR INFORMATION ONLY:  
DO NOT MANUFACTURE  
PARTS TO THIS DRAWING**



SPECIFICATIONS SUBJECT TO CHANGE WITHOUT NOTICE  
DIMENSIONS ARE FOR REFERENCE ONLY

	S1
SURFACE FIGURE AT 632.8nm (RMS)	$\lambda/8$
CLEAR APERTURE	90%
SHAPE	PARABOLIC
BEVEL	PROTECTIVE AS NEEDED



ALL DIMS IN

mm

**Edmund Optics®**

TITLE

25.4mm Dia. x 25.4mm EFL, Enhanced Deep  
UV (DUV) 90° Off-Axis Mirror

DWG NO

25465

SHEET  
1 OF 1