

NOTES:

1. SUBSTRATE: N-BK7

2. COATING (APPLY ACROSS CLEAR APERTURE)

S1&S2: Rabs ≤0.25% @ 880nm

Ravg ≤1.25% @ 400 - 870nm

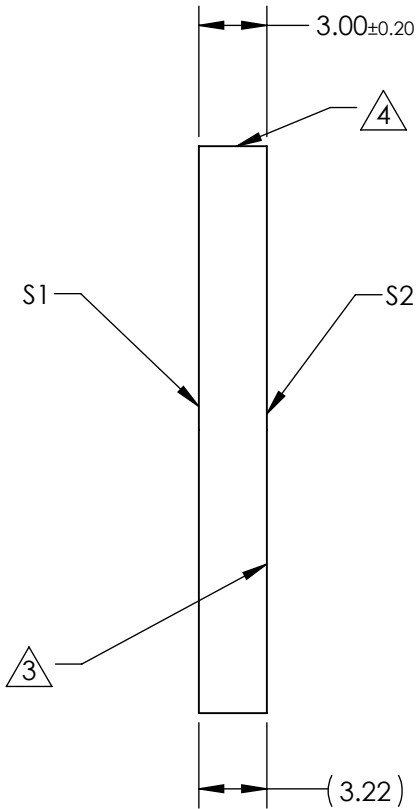
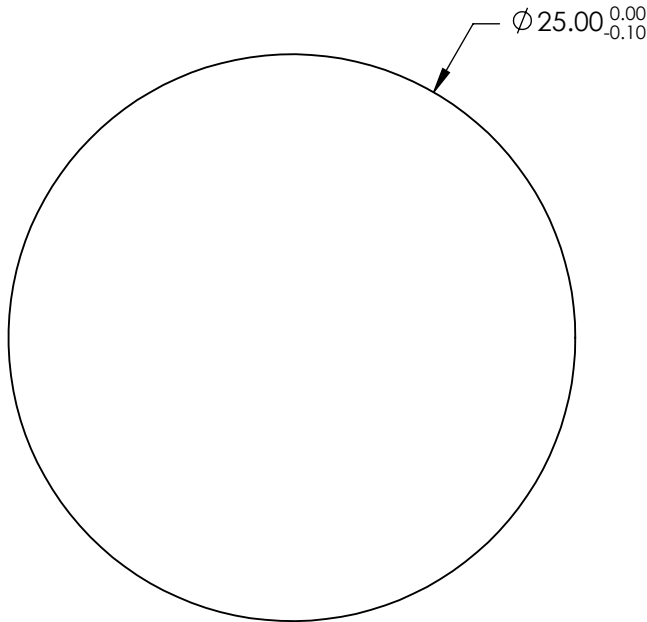
Ravg ≤1.25% @ 890 - 1000nm

3. ARROW POINTS TOWARD TILTED SURFACE

4. FINE GRIND SURFACE

5. POWER, IRREGULARITY, AND SURFACE QUALITY
SPECIFICATIONS APPLY ACROSS CLEAR APERTURE

6. ROHS COMPLIANT

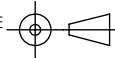


**FOR INFORMATION ONLY:
DO NOT MANUFACTURE
PARTS TO THIS DRAWING**

SPECIFICATIONS SUBJECT TO CHANGE WITHOUT NOTICE
DIMENSIONS ARE FOR REFERENCE ONLY

	S1	S2
SHAPE	PLANO	PLANO
RADIUS	INFINITY	INFINITY
MINI CLEAR APERTURE	Ø 22.50	Ø 22.50
SURFACE QUALITY	20-10	20-10
SURFACE ACCURACY	λ/10	λ/10
BEVEL	PROTECTED AS NEEDED	PROTECTED AS NEEDED

THIRD ANGLE
PROJECTION



ALL DIMS IN

mm



Edmund Optics®

TITLE

25mm, VIS-NIR Coated, N-BK7 Wedged
Window

DWG NO

25725

SHEET
14 OF 15