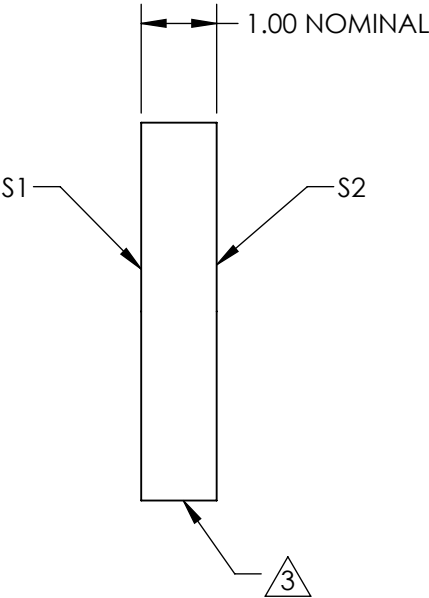
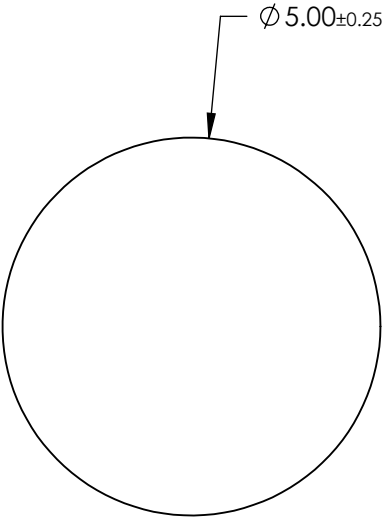
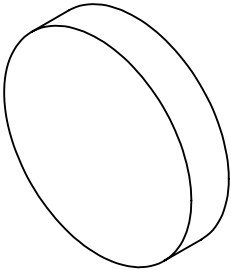


NOTES:
1. SUBSTRATE:
B270

2. COATING (APPLY ACROSS CLEAR APERTURE)
S1 & S2: R(ABS) ≤ 0.25% @ 880nm
R(AVG) ≤ 1.25% @ 400 - 870nm
R(AVG) ≤ 1.25% @ 890 - 1000nm


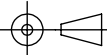
3. FINE GRIND SURFACE

4 ROHS COMPLIANT



**FOR INFORMATION ONLY:
DO NOT MANUFACTURE
PARTS TO THIS DRAWING**

SPECIFICATIONS SUBJECT TO CHANGE WITHOUT NOTICE
DIMENSIONS ARE FOR REFERENCE ONLY

| | | | | | | |
|------------------|--|---------------------|---------------------|--|--------|---|
| | | S1 | S2 |  Edmund Optics® | | |
| SHAPE | | PLANO | PLANO |  | TITLE | 5mm Diameter, VIS-NIR Coated, B270 Window |
| SURFACE QUALITY | | 60 - 40 | 60 - 40 | | DWG NO | 26571 |
| SURFACE FLATNESS | | 1λ | 1λ | | | |
| BEVEL | | PROTECTED AS NEEDED | PROTECTED AS NEEDED | ALL DIMS IN | mm | SHEET 1 OF 9 |