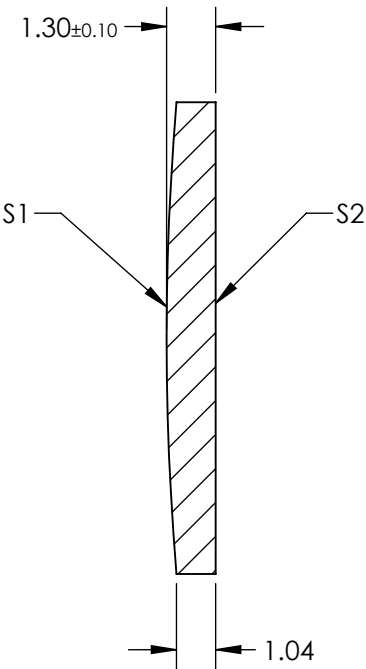
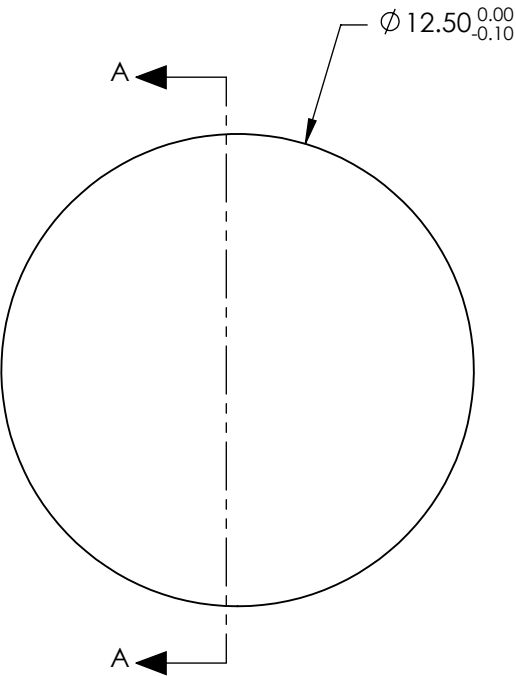


- NOTES:
- 1. SUBSTRATE: GERMANIUM
 - 2. COATING (APPLY ACROSS CLEAR APERTURE)
S1 & S2: UNCOATED
 - 3. EDGES: FINE GROUND
 - 4. CENTERING: <3 ARMIN
 - 5. ROHS COMPLIANT



FOR INFORMATION ONLY:
DO NOT MANUFACTURE
PARTS TO THIS DRAWING

SPECIFICATIONS SUBJECT TO CHANGE WITHOUT NOTICE
DIMENSIONS ARE FOR REFERENCE ONLY

	S1	S2
SHAPE	CONVEX	PLANO
RADIUS	75.1	∞
SURFACE QUALITY	60 - 40	60 - 40
CLEAR APERTURE	$\varnothing 11.25$	$\varnothing 11.25$
BEVEL	PROTECTED AS NEEDED	PROTECTED AS NEEDED

THIRD ANGLE PROJECTION		Edmund Optics®	
ALL DIMS IN mm		TITLE	12.5mm Dia. x 25mm FL, Uncoated, Ge Plano-Convex Lens
		DWG NO	25553
		SHEET 4 OF 12	