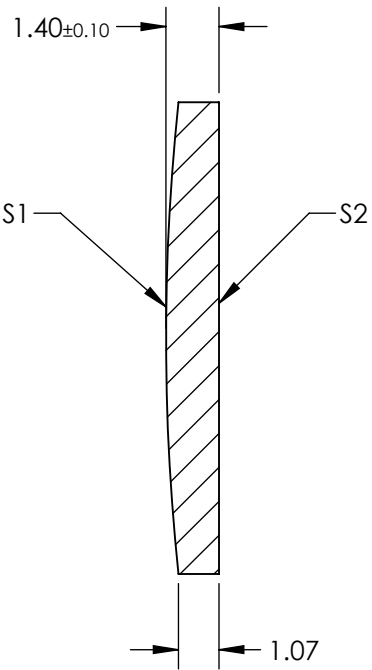
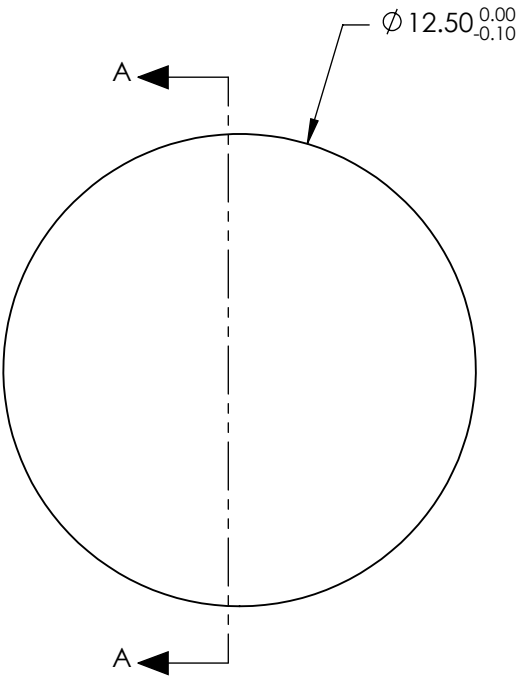

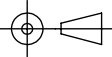


- NOTES:
- 1. SUBSTRATE: GERMANIUM
  - 2. COATING (APPLY ACROSS CLEAR APERTURE)  
S1 & S2: Ravg <5.0% @ 3 - 12µm
  - 3. EDGES: FINE GROUND
  - 4. CENTERING: <3 ARMIN
  - 5. ROHS COMPLIANT



**FOR INFORMATION ONLY:  
DO NOT MANUFACTURE  
PARTS TO THIS DRAWING**

SPECIFICATIONS SUBJECT TO CHANGE WITHOUT NOTICE  
DIMENSIONS ARE FOR REFERENCE ONLY

	S1	S2	 Edmund Optics®			
SHAPE	CONVEX	PLANO				
RADIUS	60.08	$\infty$		TITLE		
SURFACE QUALITY	60 - 40	60 - 40		12.5mm Dia. x 20mm FL, 3 - 12µm Coated, Ge Plano-Convex Lens		
CLEAR APERTURE	$\varnothing 11.25$	$\varnothing 11.25$		DWG NO		
BEVEL	PROTECTED AS NEEDED	PROTECTED AS NEEDED		25564		
			ALL DIMS IN	mm	SHEET 9 OF 12	