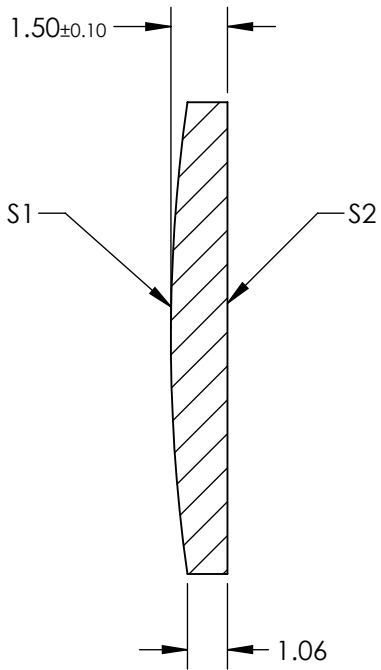
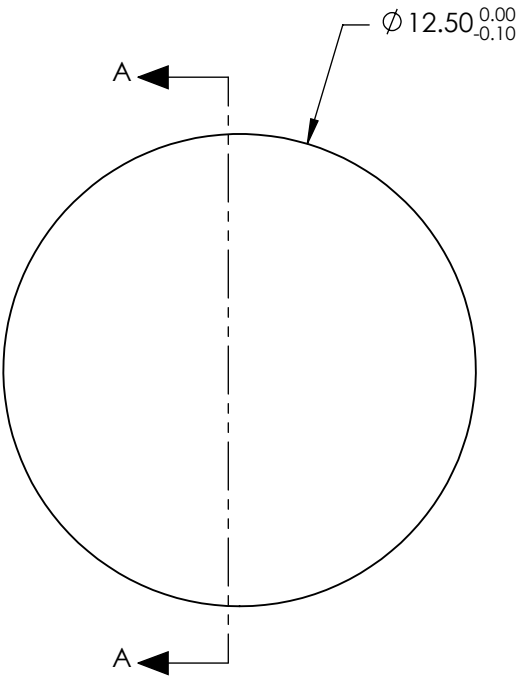

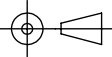


- NOTES:
- 1. SUBSTRATE: GERMANIUM
 - 2. COATING (APPLY ACROSS CLEAR APERTURE)
S1 & S2: UNCOATED
 - 3. EDGES: FINE GROUND
 - 4. CENTERING: <3 ARMIN
 - 5. ROHS COMPLIANT



**FOR INFORMATION ONLY:
DO NOT MANUFACTURE
PARTS TO THIS DRAWING**

SPECIFICATIONS SUBJECT TO CHANGE WITHOUT NOTICE
DIMENSIONS ARE FOR REFERENCE ONLY

	S1	S2	 Edmund Optics®			
SHAPE	CONVEX	PLANO				
RADIUS	45.06	∞				
SURFACE QUALITY	60 - 40	60 - 40	ALL DIMS IN	mm	TITLE	12.5mm Dia. x 15mm FL, Uncoated, Ge Plano-Convex Lens
CLEAR APERTURE	$\text{Ø } 11.25$	$\text{Ø } 11.25$			DWG NO	25551
BEVEL	PROTECTED AS NEEDED	PROTECTED AS NEEDED				SHEET 2 OF 12