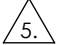
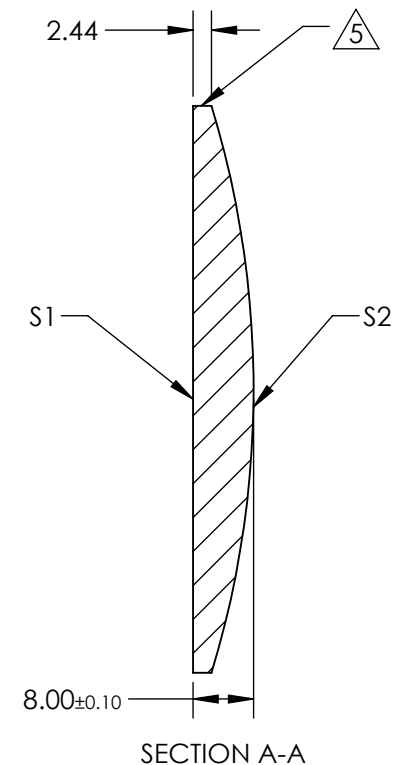
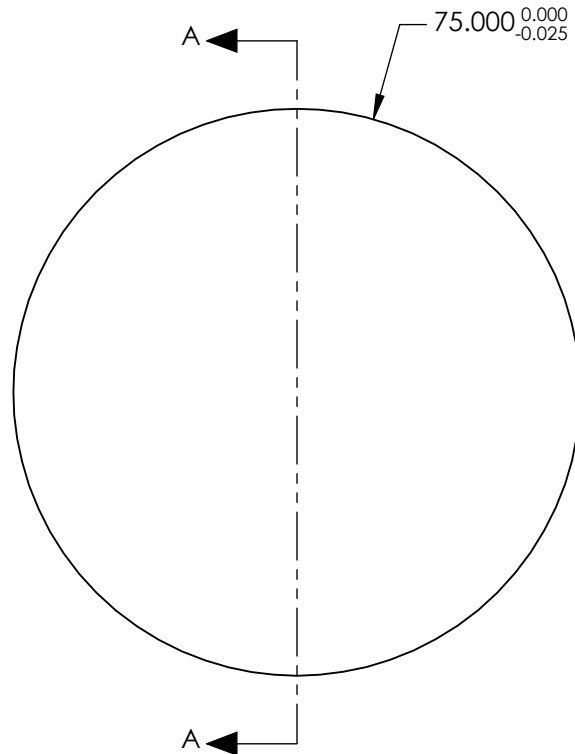


NOTES:

- SUBSTRATE:
N-BK7
- ROHS COMPLIANT
- CENTERING TOLERANCE (AT 587.6nm):
BEAM DEVIATION (HALF ANGLE): <45 ARCMIN
- COATING (APPLY ACROSS COATING APERTURE)
S1 & S2: VIS-EXT
R(AVG) $\leq 0.5\%$ FROM 350-700nm @ 0° AOI
-  FINE GRIND SURFACE
- POWER, IRREGULARITY, AND SURFACE QUALITY
SPECIFICATIONS APPLY ACROSS CLEAR APERTURE
- FOCAL LENGTH (EFL): 250mm $\pm 1\%$
BACK FOCAL LENGTH (BFL): 244.73mm
- PROTECTIVE BEVEL AS NEEDED
- DESIGN WAVELENGTH: 587.6nm



**FOR INFORMATION ONLY:
DO NOT MANUFACTURE
PARTS TO THIS DRAWING**

SPECIFICATIONS SUBJECT TO CHANGE WITHOUT NOTICE
DIMENSIONS ARE FOR REFERENCE ONLY

	S1	S2
SHAPE	PLANO	CONVEX
RADIUS	INFINITY	129.20
SURFACE QUALITY	40-20	40-20
MIN CLEAR APERTURE	$\phi 73.50$	$\phi 73.50$
MIN COATING APERTURE	$\phi 73.50$	$\phi 73.50$
POWER AT 632.8nm	1.5λ	1.5λ
IRREGULARITY AT 632.8nm	$\lambda/4$	$\lambda/4$



ALL DIMS IN

mm



Edmund Optics®

TITLE

75.0mm Dia. x 250.0mm FL, VIS-EXT Coated,
Plano-Convex Lens

DWG NO

26112

SHEET
1 OF 1