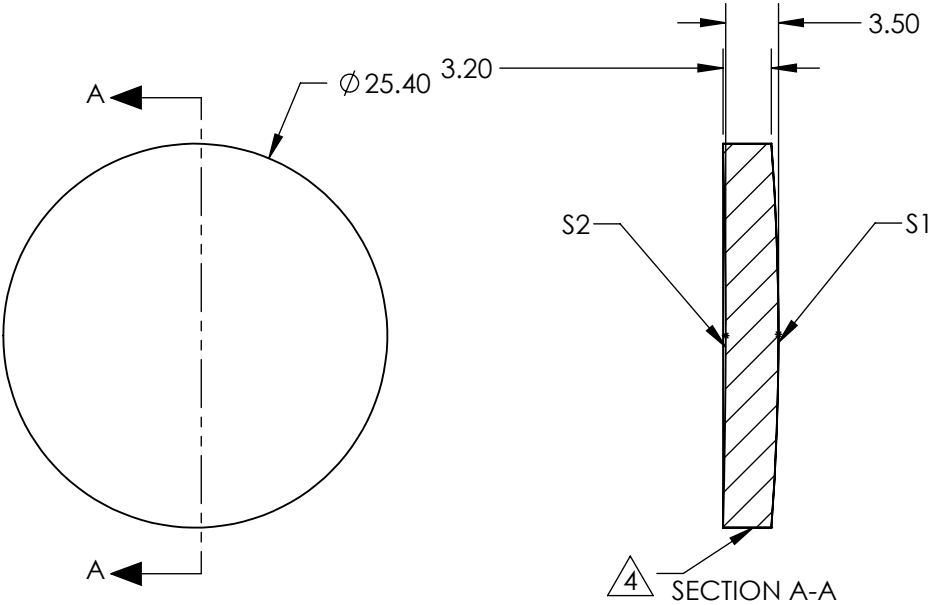


NOTES:

1. SUBSTRATE:  
Zinc Selenide (ZnSe), CVD Grade
2. CENTERING TOLERANCE:  
EDGE THICKNESS VARIATION: <25µm
3. COATING (APPLY ACROSS CLEAR APERTURE)
- S1&S2: R(AVG) <4.5% @ 1 - 12µm  
R(ABS) <8% @ 1 - 12µm

4. FINE GRIND SURFACE

5. SURFACE ROUGHNESS: <100 Ra



**FOR INFORMATION ONLY:  
DO NOT MANUFACTURE  
PARTS TO THIS DRAWING**

SPECIFICATIONS SUBJECT TO CHANGE WITHOUT NOTICE  
DIMENSIONS ARE FOR REFERENCE ONLY

	S1	S2
SHAPE	CONVEX	CONCAVE
RADIUS	179.4926	466.3381
SURFACE QUALITY	60-40	60-40
CLEAR APERTURE	ø22.86	ø22.86
IRREGULARITY AT 632.8nm	λ/2	λ/2
BEVEL	PROTECTED AS NEEDED	PROTECTED AS NEEDED

THIRD ANGLE PROJECTION		Edmund Optics®	
ALL DIMS IN mm		TITLE	25.4mm Dia. x 203.2mm FL, 1 - 12µm BBAR Coated, ISP Optics ZnSe Aspheric Lens
		DWG NO	24979
		SHEET 18 OF 19	