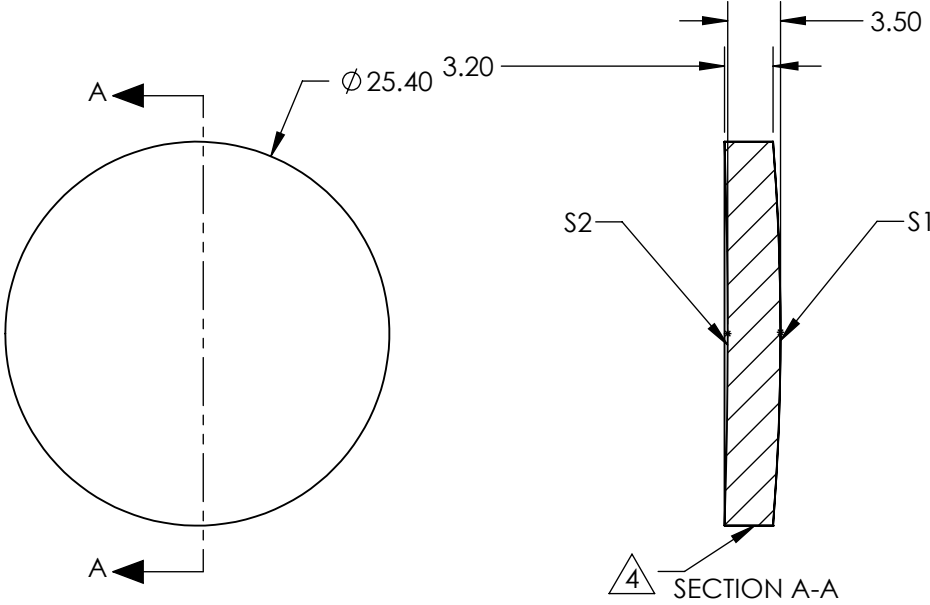


NOTES:

1. SUBSTRATE:
Zinc Selenide (ZnSe), CVD Grade
2. CENTERING TOLERANCE:
EDGE THICKNESS VARIATION: <25µm
3. COATING (APPLY ACROSS CLEAR APERTURE)
- S1&S2: R(AVG) <4.5% @ 1 - 12µm
R(ABS) <8% @ 1 - 12µm

4. FINE GRIND SURFACE


5. SURFACE ROUGHNESS: <100 Ra



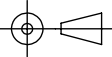
FOR INFORMATION ONLY:
DO NOT MANUFACTURE
PARTS TO THIS DRAWING

SPECIFICATIONS SUBJECT TO CHANGE WITHOUT NOTICE
DIMENSIONS ARE FOR REFERENCE ONLY

	S1	S2
SHAPE	CONVEX	CONCAVE
RADIUS	155.8542	399.2375
SURFACE QUALITY	60-40	60-40
CLEAR APERTURE	ø22.86	ø22.86
IRREGULARITY AT 632.8nm	λ/2	λ/2
BEVEL	PROTECTED AS NEEDED	PROTECTED AS NEEDED

 Edmund Optics®

THIRD ANGLE PROJECTION



TITLE

25.4mm Dia. x 177.8mm FL, 1 - 12µm BBAR Coated, ISP Optics ZnSe Aspheric Lens

ALL DIMS IN

mm

DWG NO

24978

SHEET

17 OF 19