

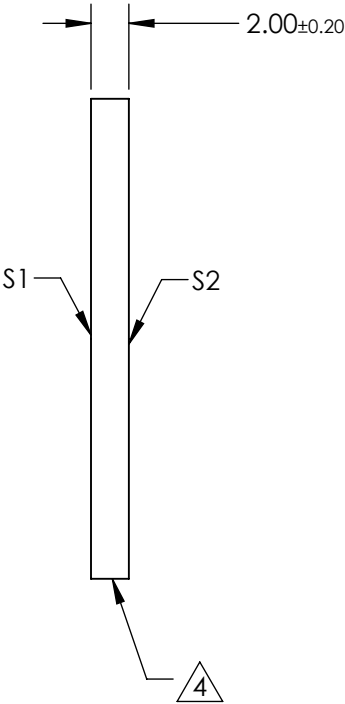
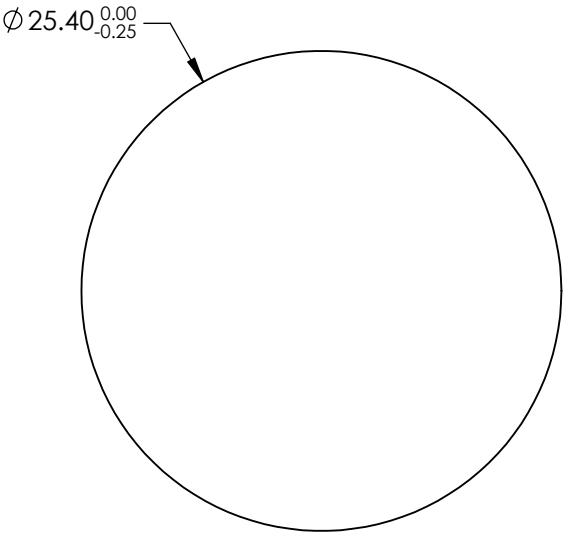
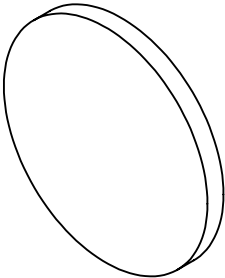
NOTES:

- 1. SUBSTRATE: N-BK7
- 2. S2 TO BE PARALLEL WITH S1 TO <1 ARCMIN
- 2. COATING (APPLY ACROSS CLEAR APERTURE)

S1&S2: R(ABS) ≤1.5% @ 750 - 800nm
R(ABS) ≤1.0% @ 800 - 1550nm
R(ABS) ≤0.7% @ 750 - 1550nm

4. FINE GRIND SURFACE


- 5. ROHS COMPLIANT



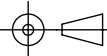
**FOR INFORMATION ONLY:
DO NOT MANUFACTURE
PARTS TO THIS DRAWING**

SPECIFICATIONS SUBJECT TO CHANGE WITHOUT NOTICE
DIMENSIONS ARE FOR REFERENCE ONLY

	S1	S2
SHAPE	PLANO	PLANO
SURFACE QUALITY	60 - 40	60 - 40
CLEAR APERTURE	Ø 22.86	Ø 22.86
BEVEL	PROTECTED AS NEEDED	PROTECTED AS NEEDED

**Edmund Optics®**

THIRD ANGLE
PROJECTION



TITLE

25.4mm Dia., 2mm Thick, NIR II Coated λ/4 N-BK7 Window

ALL DIMS IN

mm

DWG NO

25809

SHEET

21 OF 36