

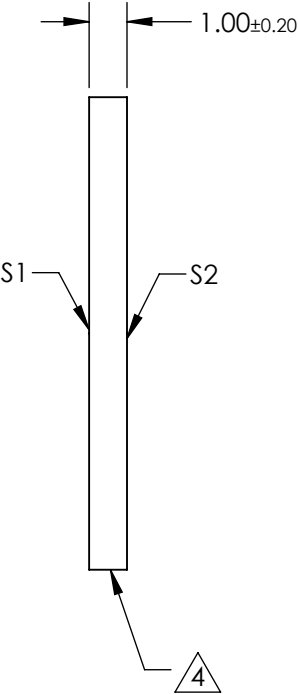
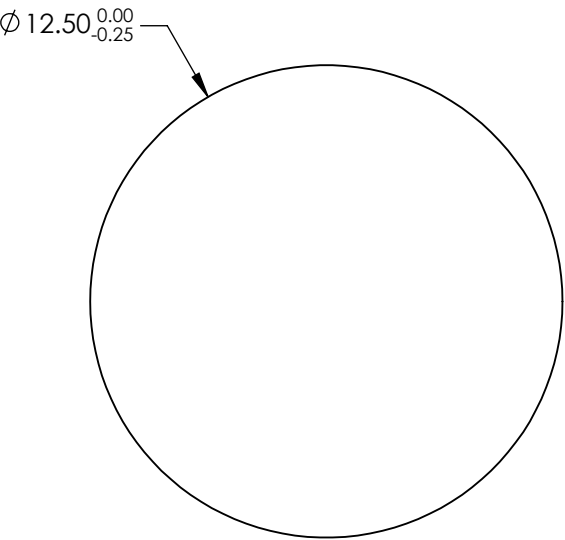
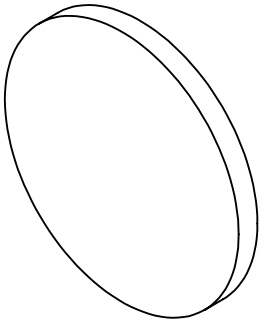
NOTES:

- 1. SUBSTRATE: N-BK7
- 2. S2 TO BE PARALLEL WITH S1 TO <1 ARCMIN
- 2. COATING (APPLY ACROSS CLEAR APERTURE)

S1&S2: R(ABS) ≤1.5% @ 750 - 800nm
R(ABS) ≤1.0% @ 800 - 1550nm
R(ABS) ≤0.7% @ 750 - 1550nm

4. FINE GRIND SURFACE

- 5. ROHS COMPLIANT



**FOR INFORMATION ONLY:
DO NOT MANUFACTURE
PARTS TO THIS DRAWING**

SPECIFICATIONS SUBJECT TO CHANGE WITHOUT NOTICE
DIMENSIONS ARE FOR REFERENCE ONLY

| | S1 | S2 |
|-----------------|---------------------|---------------------|
| SHAPE | PLANO | PLANO |
| SURFACE QUALITY | 60 - 40 | 60 - 40 |
| CLEAR APERTURE | Ø 11.25 | Ø 11.25 |
| BEVEL | PROTECTED AS NEEDED | PROTECTED AS NEEDED |



ALL DIMS IN mm

Edmund Optics®

TITLE

12.5mm Dia., 1mm Thick, NIR II Coated λ/4 N-BK7 Window

DWG NO

25791

SHEET
7 OF 36