

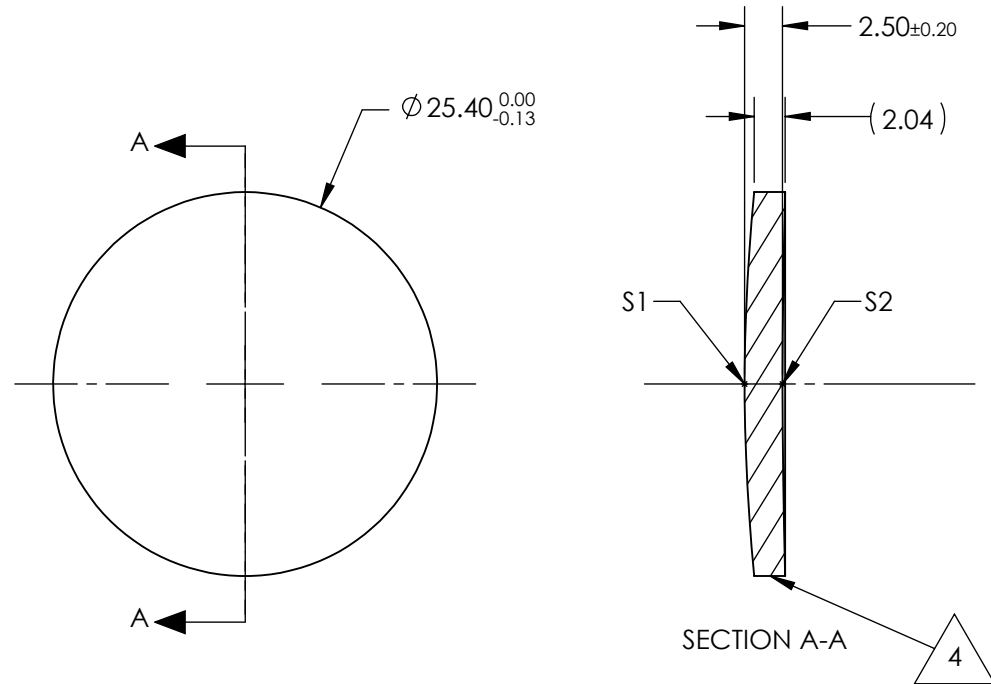
NOTES:

1. SUBSTRATE:
Zinc Selenide (ZnSe), CVD Grade
2. CENTERING TOLERANCE:
<3 ARCMIN
3. COATING (APPLY ACROSS CLEAR APERTURE)
S1 & S2: R(AVG) <0.5% @ 8 - 12µm
R(ABS) <1% @ 8 - 12µm



4. FINE GRIND SURFACE

5. FOCAL LENGTH TOLERANCE: ±2%

6. ROHS COMPLIANT



**FOR INFORMATION ONLY:
DO NOT MANUFACTURE
PARTS TO THIS DRAWING**

PARTS TO THIS DRAWING			EFL @ 10.6µm	127	SPECIFICATIONS SUBJECT TO CHANGE WITHOUT NOTICE DIMENSIONS ARE FOR REFERENCE ONLY			
			BFL @ 10.6µm	124.63				
	S1	S2	 Edmund Optics®			25.4mm Dia. x 127mm FL, 8 - 12µm BBAR Coated, ISP Optics Zinc Selenide (ZnSe) Meniscus Lens		
SHAPE	CONVEX	CONCAVE						
RADIUS	127.35	449.8				TITLE		
IRREGULARITY AT 10.6µm	λ/20	λ/20						
SURFACE QUALITY	60-40	60-40	ALL DIMS IN			mm		
CLEAR APERTURE	ø22.86	ø22.86						
BEVEL	PROTECTED AS NEEDED	PROTECTED AS NEEDED	DWG NO			24938		
						SHEET 1 OF 1		