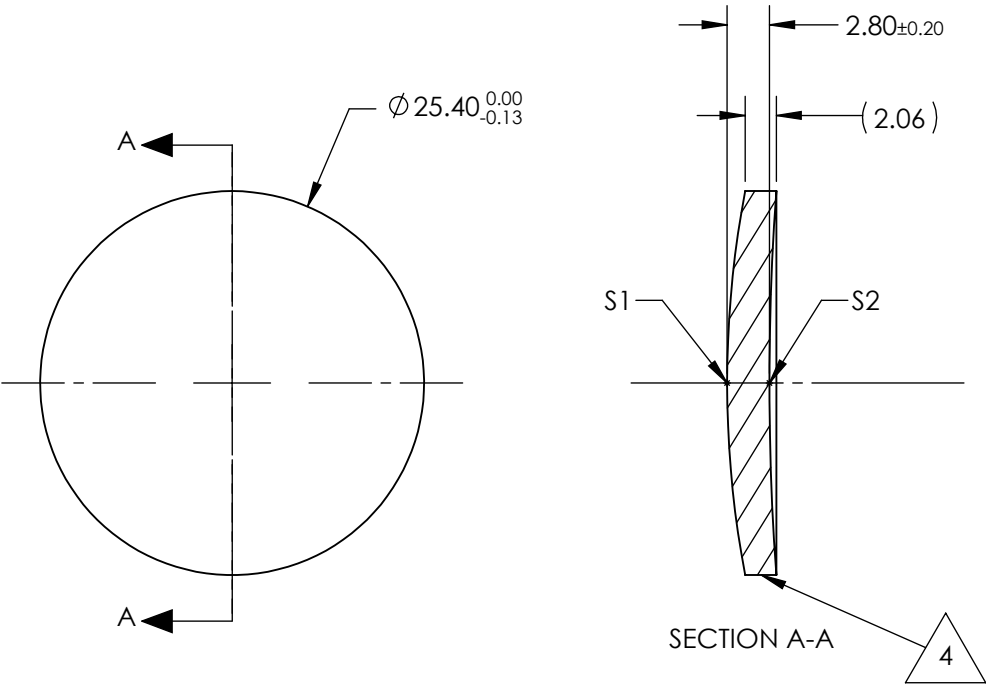


- NOTES:
- 1. SUBSTRATE:
Zinc Selenide (ZnSe), CVD Grade
 - 2. CENTERING TOLERANCE:
<3 ARCMIN
 - 3. COATING (APPLY ACROSS CLEAR APERTURE)
S1 & S2: NONE
 - 4. FINE GRIND SURFACE
 - 5. FOCAL LENGTH TOLERANCE: ±2%
 - 6. ROHS COMPLIANT



**FOR INFORMATION ONLY:
DO NOT MANUFACTURE
PARTS TO THIS DRAWING**

	S1	S2
SHAPE	CONVEX	CONCAVE
RADIUS	68.23	179.47
IRREGULARITY AT 10.6µm	$\lambda/20$	$\lambda/20$
SURFACE QUALITY	60-40	60-40
CLEAR APERTURE	$\varnothing 22.86$	$\varnothing 22.86$
BEVEL	PROTECTED AS NEEDED	PROTECTED AS NEEDED

EFL @ 10.6µm	76.2
BFL @ 10.6µm	75.49
THIRD ANGLE PROJECTION	
ALL DIMS IN	mm

SPECIFICATIONS SUBJECT TO CHANGE WITHOUT NOTICE
DIMENSIONS ARE FOR REFERENCE ONLY

Edmund Optics®

25.4mm Dia. x 76.2mm FL, Uncoated, ISP
Optics Zinc Selenide (ZnSe) Meniscus Lens

TITLE

DWG NO

24914

SHEET
1 OF 1