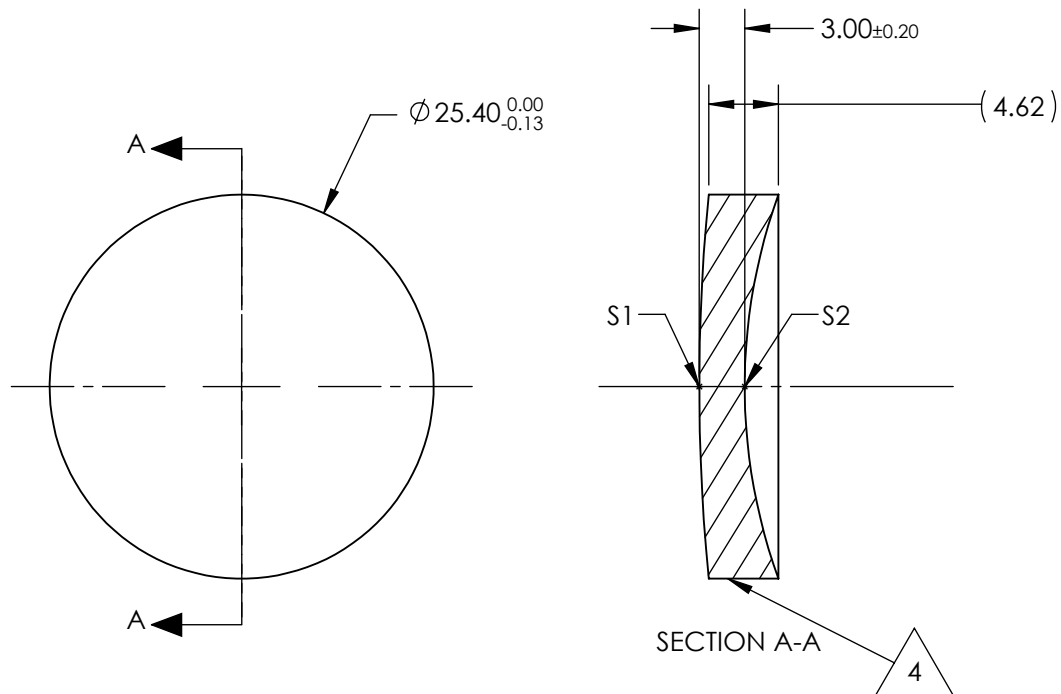


NOTES:

1. SUBSTRATE:
Zinc Selenide (ZnSe), CVD Grade
2. CENTERING TOLERANCE:
<3 ARCMIN
3. COATING (APPLY ACROSS CLEAR APERTURE)
S1 & S2: NONE
4. FINE GRIND SURFACE
5. FOCAL LENGTH TOLERANCE: $\pm 2\%$
6. ROHS COMPLIANT



**FOR INFORMATION ONLY:
DO NOT MANUFACTURE
PARTS TO THIS DRAWING**

| | S1 | S2 |
|------------------------------|---------------------|---------------------|
| SHAPE | CONVEX | CONCAVE |
| RADIUS | 130.62 | 37.15 |
| IRREGULARITY AT 10.6 μ m | $\lambda/20$ | $\lambda/20$ |
| SURFACE QUALITY | 60-40 | 60-40 |
| CLEAR APERTURE | $\varnothing 22.86$ | $\varnothing 22.86$ |
| BEVEL | PROTECTED AS NEEDED | PROTECTED AS NEEDED |

| | |
|------------------------|--------|
| EFL @ 10.6 μ m | -38 |
| BFL @ 10.6 μ m | -37.21 |
| THIRD ANGLE PROJECTION | |
| ALL DIMS IN | mm |

SPECIFICATIONS SUBJECT TO CHANGE WITHOUT NOTICE
DIMENSIONS ARE FOR REFERENCE ONLY

Edmund Optics®

25.4mm Dia. x -38mm FL, Uncoated, ISP
Optics Zinc Selenide (ZnSe) Negative
Meniscus Lens

TITLE

DWG NO

24900

SHEET
1 OF 1