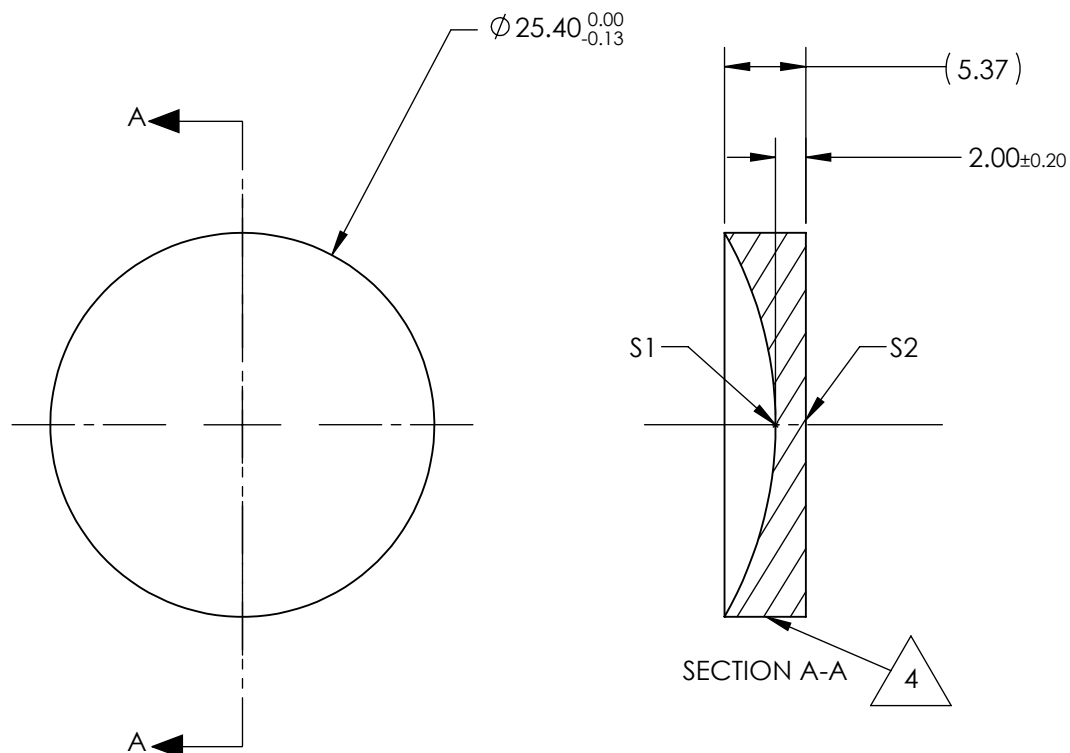


NOTES:

1. SUBSTRATE:
Calcium Fluoride, IR Grade (CaF₂)
2. CENTERING TOLERANCE:
<3 ARCMIN
3. COATING (APPLY ACROSS CLEAR APERTURE)
S1 & S2: NONE
4. FINE GRIND SURFACE
5. FOCAL LENGTH TOLERANCE: ±2%
6. ROHS COMPLIANT



**FOR INFORMATION ONLY:
DO NOT MANUFACTURE
PARTS TO THIS DRAWING**

SPECIFICATIONS SUBJECT TO CHANGE WITHOUT NOTICE
DIMENSIONS ARE FOR REFERENCE ONLY

	S1	S2	EFL @ 5µm	-63.5	 Edmund Optics®		
SHAPE	CONCAVE	PLANO	BFL @ 5µm	-65.57			
RADIUS	25.59	INFINITY	THIRD ANGLE PROJECTION 		TITLE	25.4mm Dia. x 63.5mm FL, Uncoated, ISP Optics Calcium Fluoride (CaF ₂) PCV Lens	
IRREGULARITY AT 632.8nm	λ	λ					
SURFACE QUALITY	60-40	60-40	ALL DIMS IN		DWG NO	24782	
CLEAR APERTURE	ø22.86	ø22.86					
BEVEL	PROTECTED AS NEEDED	PROTECTED AS NEEDED	mm				SHEET 1 OF 1