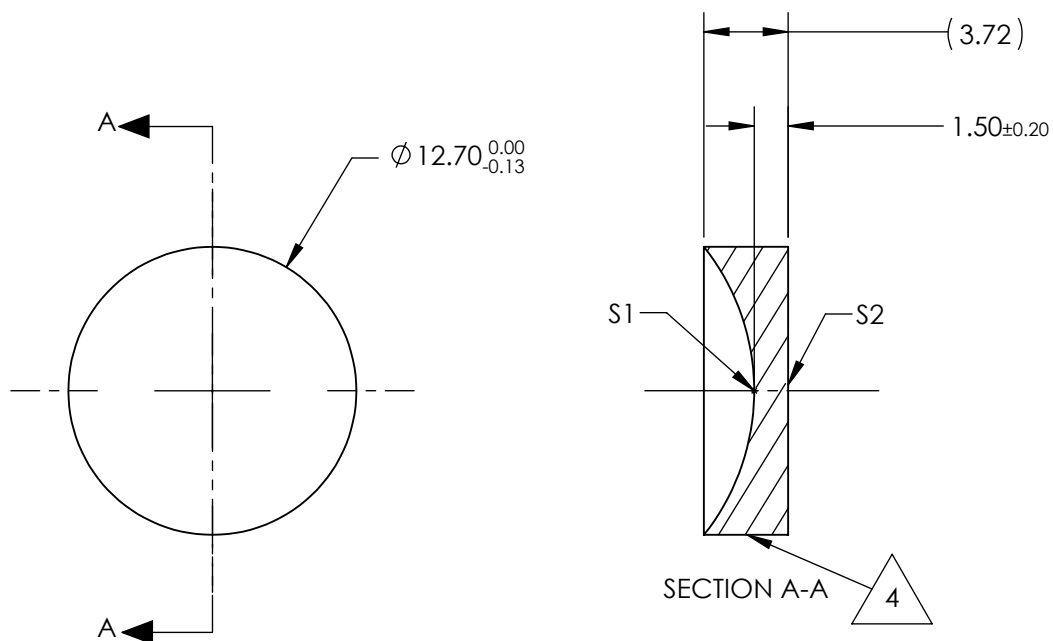


NOTES:

1. SUBSTRATE:  
Calcium Fluoride, IR Grade (CaF<sub>2</sub>)
2. CENTERING TOLERANCE:  
<3 ARCMIN
3. COATING (APPLY ACROSS CLEAR APERTURE)  
S1 & S2: NONE
4. FINE GRIND SURFACE
5. FOCAL LENGTH TOLERANCE: ±2%
6. ROHS COMPLIANT



**FOR INFORMATION ONLY:  
DO NOT MANUFACTURE  
PARTS TO THIS DRAWING**

SPECIFICATIONS SUBJECT TO CHANGE WITHOUT NOTICE  
DIMENSIONS ARE FOR REFERENCE ONLY

	S1	S2	EFL @ 5μm	-25.4	 <b>Edmund Optics®</b>		
SHAPE	CONCAVE	PLANO	BFL @ 5μm	-26.66			
RADIUS	10.209	INFINITY	THIRD ANGLE PROJECTION 		TITLE	12.7mm Dia. x 25.4mm FL, Uncoated, ISP Optics Calcium Fluoride (CaF <sub>2</sub> ) PCV Lens	
IRREGULARITY AT 632.8nm	λ	λ					
SURFACE QUALITY	60-40	60-40	ALL DIMS IN		DWG NO	24778	
CLEAR APERTURE	ø11.43	ø11.43					
BEVEL	PROTECTED AS NEEDED	PROTECTED AS NEEDED	mm				SHEET 1 OF 1