
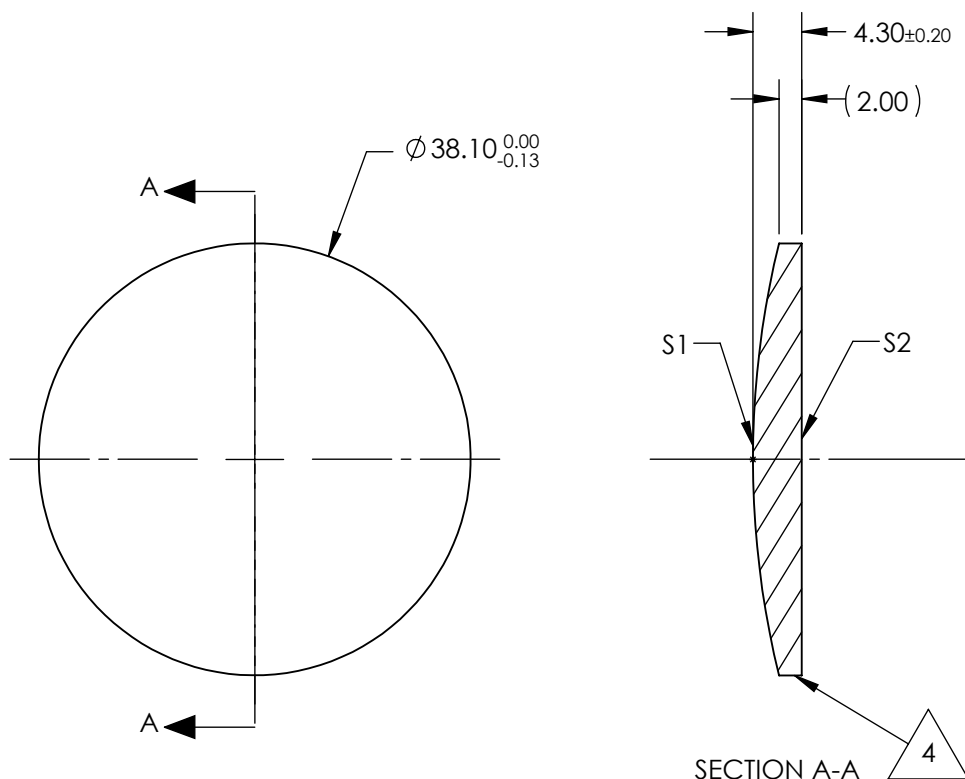


NOTES:

1. SUBSTRATE:
Calcium Fluoride, IR Grade (CaF₂)
2. CENTERING TOLERANCE:
<3 ARCMIN
3. COATING (APPLY ACROSS CLEAR APERTURE)
S1 & S2: NONE
4.  FINE GRIND SURFACE
5. FOCAL LENGTH TOLERANCE: ±2%
6. ROHS COMPLIANT



**FOR INFORMATION ONLY:
DO NOT MANUFACTURE
PARTS TO THIS DRAWING**

SPECIFICATIONS SUBJECT TO CHANGE WITHOUT NOTICE
DIMENSIONS ARE FOR REFERENCE ONLY

	S1	S2	EFL @ 5µm	200.0	 Edmund Optics®		
SHAPE	CONVEX	PLANO	BFL @ 5µm	197.4			
RADIUS	79.98	INFINITY			TITLE	38.1mm Dia. x 200mm FL, Uncoated, ISP Optics Calcium Fluoride (CaF ₂) PCX Lens	
IRREGULARITY AT 632.8nm	λ	λ					
SURFACE QUALITY	60-40	60-40	ALL DIMS IN		DWG NO	24809	
CLEAR APERTURE	ø34.29	ø34.29					
BEVEL	PROTECTED AS NEEDED	PROTECTED AS NEEDED	mm				SHEET 1 OF 1