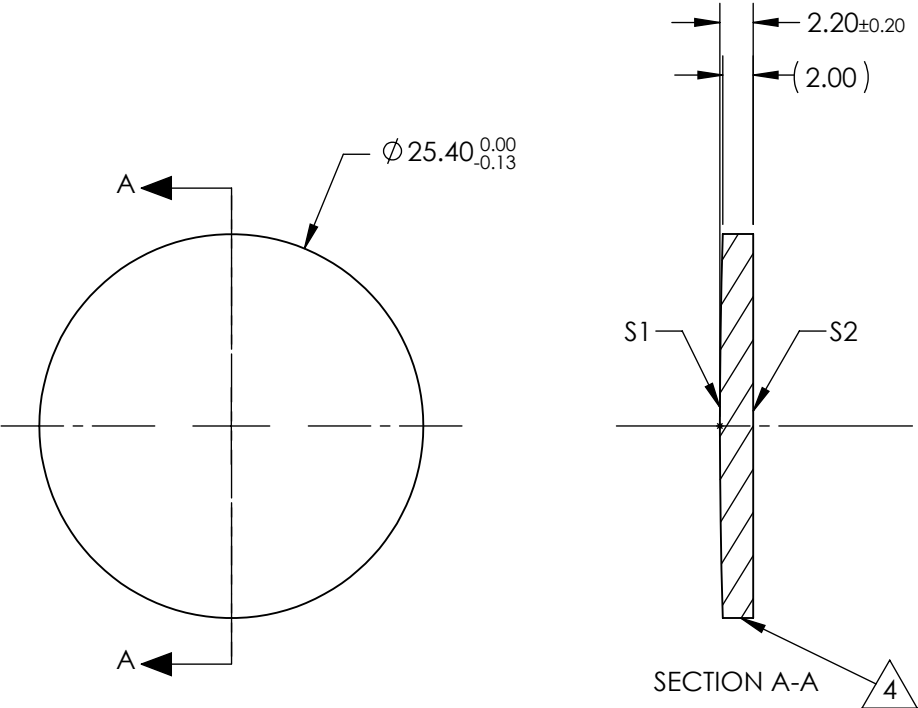


- NOTES:
- 1. SUBSTRATE:
Calcium Fluoride, IR Grade (CaF2)
 - 2. CENTERING TOLERANCE:
<3 ARCMIN
 - 3. COATING (APPLY ACROSS CLEAR APERTURE)
S1 & S2: NONE
 - 4. FINE GRIND SURFACE
 - 5. FOCAL LENGTH TOLERANCE: ±2%
 - 6. ROHS COMPLIANT



**FOR INFORMATION ONLY:
DO NOT MANUFACTURE
PARTS TO THIS DRAWING**

SPECIFICATIONS SUBJECT TO CHANGE WITHOUT NOTICE
DIMENSIONS ARE FOR REFERENCE ONLY

			EFL @ 5μm	1000.0	DIMENSIONS ARE FOR REFERENCE ONLY		
SHAPE	S1 CONVEX	S2 PLANO	BFL @ 5μm	124.86	 Edmund Optics®		
RADIUS	399.9	INFINITY					
IRREGULARITY AT 632.8nm	1λ	1λ			TITLE	25.4mm Dia. x 1000mm FL, Uncoated, ISP Optics Calcium Fluoride (CaF2) PCX Lens	
SURFACE QUALITY	60-40	60-40					
CLEAR APERTURE	ø22.86	ø22.86			DWG NO	24802	
BEVEL	PROTECTED AS NEEDED	PROTECTED AS NEEDED	ALL DIMS IN	mm			
					SHEET 1 OF 1		