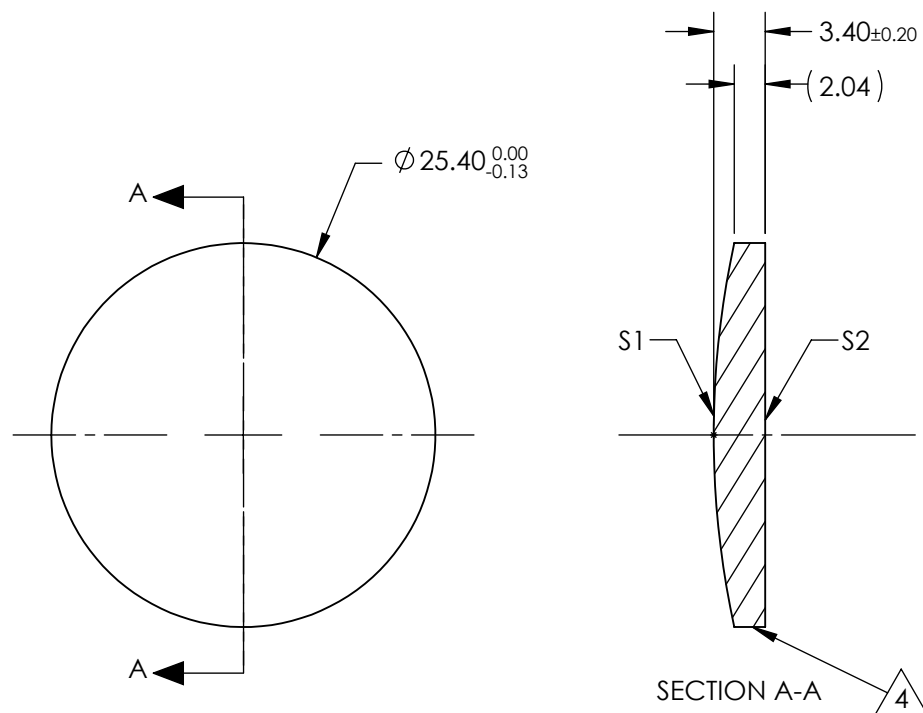



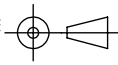
NOTES:

1. SUBSTRATE:
Calcium Fluoride, IR Grade (CaF₂)
2. CENTERING TOLERANCE:
<3 ARCMIN
3. COATING (APPLY ACROSS CLEAR APERTURE)
S1 & S2: NONE
4. FINE GRIND SURFACE
5. FOCAL LENGTH TOLERANCE: ±2%
6. ROHS COMPLIANT



**FOR INFORMATION ONLY:
DO NOT MANUFACTURE
PARTS TO THIS DRAWING**

SPECIFICATIONS SUBJECT TO CHANGE WITHOUT NOTICE
DIMENSIONS ARE FOR REFERENCE ONLY

| | | | | | | | |
|-------------------------|---------------------|---------------------|--|--------|---|---|-----------------|
| | S1 | S2 | EFL @ 5µm | 150.0 |  Edmund Optics® | | |
| SHAPE | CONVEX | PLANO | BFL @ 5µm | 248.55 | | | |
| RADIUS | 59.98 | INFINITY | THIRD ANGLE PROJECTION  | | TITLE | 25.4mm Dia. x 150mm FL, Uncoated, ISP Optics Calcium Fluoride (CaF ₂) PCX Lens | |
| IRREGULARITY AT 632.8nm | 1λ | 1λ | | | | | |
| SURFACE QUALITY | 60-40 | 60-40 | ALL DIMS IN | | DWG NO | 24799 | |
| CLEAR APERTURE | ø22.86 | ø22.86 | | | | | |
| BEVEL | PROTECTED AS NEEDED | PROTECTED AS NEEDED | mm | | | | SHEET 1 OF 1 |