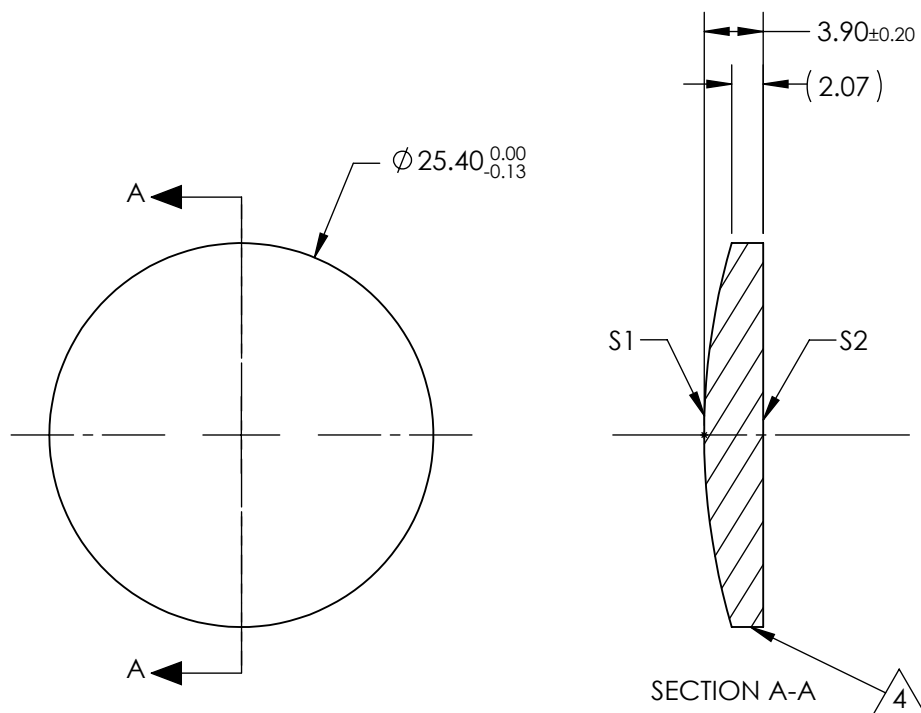



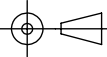
NOTES:

1. SUBSTRATE:
Barium Fluoride (BaF₂)
2. CENTERING TOLERANCE:
<3 ARCMIN
3. COATING (APPLY ACROSS CLEAR APERTURE)
S1 & S2: NONE
4. FINE GRIND SURFACE
5. FOCAL LENGTH TOLERANCE: ±2%
6. ROHS COMPLIANT



**FOR INFORMATION ONLY:
DO NOT MANUFACTURE
PARTS TO THIS DRAWING**

SPECIFICATIONS SUBJECT TO CHANGE WITHOUT NOTICE
DIMENSIONS ARE FOR REFERENCE ONLY

	S1	S2	EFL @ 5µm	100.0	 Edmund Optics®		
SHAPE	CONVEX	PLANO	BFL @ 5µm	97.26			
RADIUS	45.08	INFINITY	THIRD ANGLE PROJECTION 		TITLE	25.4mm Dia. x 100mm FL, Uncoated, ISP Optics Barium Fluoride (BaF ₂) PCX Lens	
IRREGULARITY AT 632.8nm	1λ	1λ					
SURFACE QUALITY	60-40	60-40	ALL DIMS IN		DWG NO	24748	
CLEAR APERTURE	ø22.86	ø22.86					
BEVEL	PROTECTED AS NEEDED	PROTECTED AS NEEDED					SHEET 1 OF 1