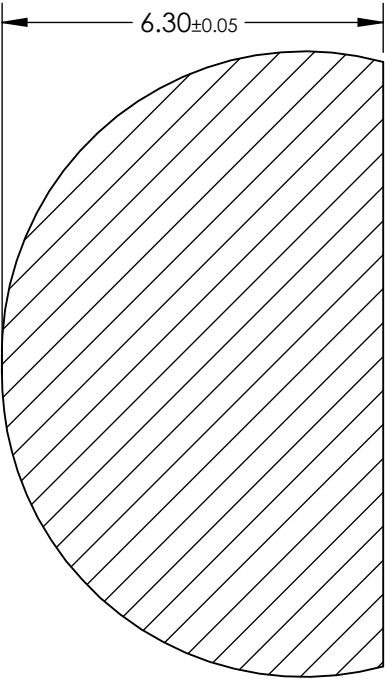
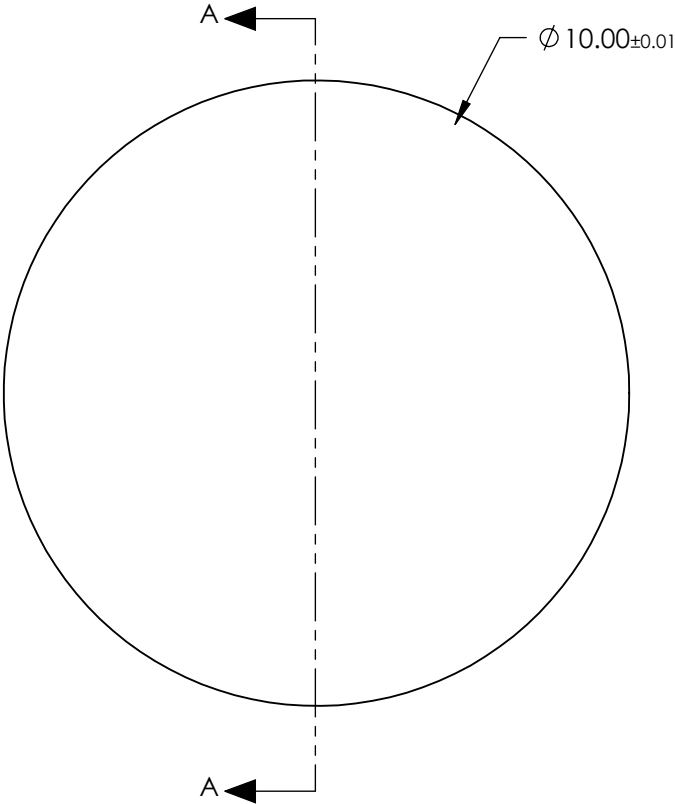


- NOTES:
- 1. SUBSTRATE:
Silicon (Si)
 - 2. COATING

NONE
 - 3. FINISH:
POLISHED
 - 4. ROHS COMPLIANT



SECTION A-A

**FOR INFORMATION ONLY:
DO NOT MANUFACTURE
PARTS TO THIS DRAWING**

SPECIFICATIONS SUBJECT TO CHANGE WITHOUT NOTICE
DIMENSIONS ARE FOR REFERENCE ONLY

EO[®] Edmund Optics[®]

THIRD ANGLE PROJECTION 		TITLE	10mm Dia., 6.3mm Thick, Uncoated, ISP Optics Silicon (Si) Hyper Hemispherical Lens	
ALL DIMS IN	mm	DWG NO	24727	SHEET 15 OF 19