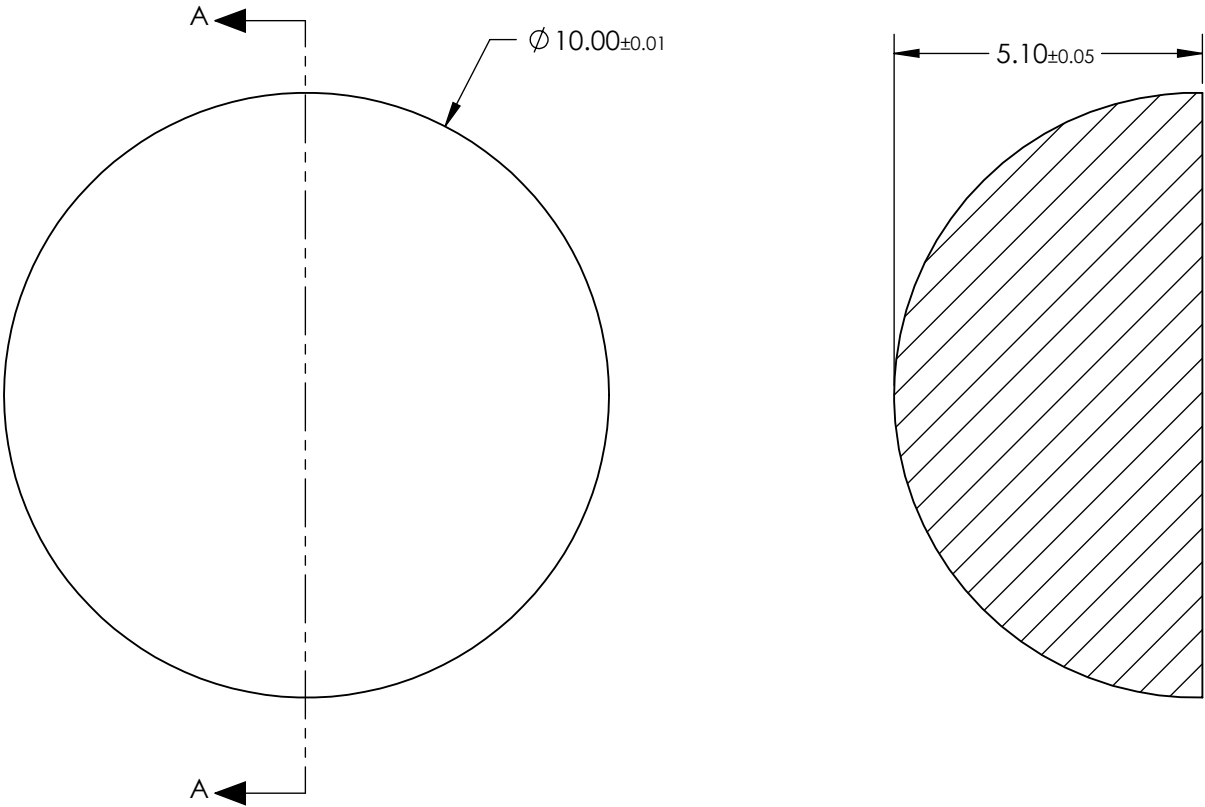


- NOTES:
- 1. SUBSTRATE:  
Silicon (Si)
  - 2. COATING  
  
NONE
  - 3. FINISH:  
POLISHED
  - 4. ROHS COMPLIANT



**FOR INFORMATION ONLY:  
DO NOT MANUFACTURE  
PARTS TO THIS DRAWING**

SPECIFICATIONS SUBJECT TO CHANGE WITHOUT NOTICE  
DIMENSIONS ARE FOR REFERENCE ONLY

**EO<sup>®</sup> Edmund Optics<sup>®</sup>**

THIRD ANGLE PROJECTION 		TITLE	10mm Dia., 5.1mm Thick, Uncoated, ISP Optics Silicon (Si) Hyper Hemispherical Lens	
ALL DIMS IN	mm	DWG NO	24725	SHEET 13 OF 19