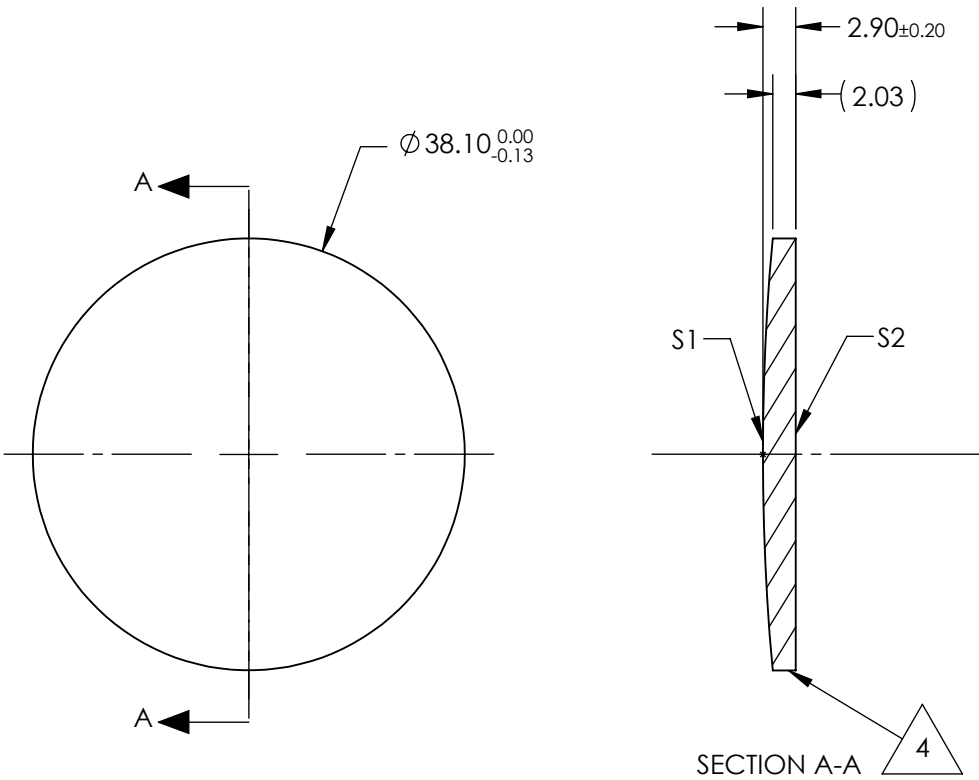



- NOTES:
- 1. SUBSTRATE:
Zinc Selenide (ZnSe), CVD Grade
 - 2. CENTERING TOLERANCE:
<3 ARCMIN
 - 3. COATING (APPLY ACROSS CLEAR APERTURE)
S1 & S2: NONE
 - 4. FINE GRIND SURFACE
 - 5. FOCAL LENGTH TOLERANCE: ±2%
 - 6. ROHS COMPLIANT



**FOR INFORMATION ONLY:
DO NOT MANUFACTURE
PARTS TO THIS DRAWING**

SPECIFICATIONS SUBJECT TO CHANGE WITHOUT NOTICE
DIMENSIONS ARE FOR REFERENCE ONLY

	S1	S2	EFL @ 10.6µm	150.0	 Edmund Optics®		
SHAPE	CONVEX	PLANO	BFL @ 10.6µm	148.44			
RADIUS	209.9	INFINITY			TITLE	38.1mm Dia. x 150mm FL, Uncoated, ISP Optics ZnSe Plano-Convex Lens	
IRREGULARITY AT 10.6µm	λ/20	λ/20					
SURFACE QUALITY	60-40	60-40			DWG NO	24955	
CLEAR APERTURE	ø34.29	ø34.29					
BEVEL	PROTECTED AS NEEDED	PROTECTED AS NEEDED	ALL DIMS IN	mm			SHEET 1 OF 1