
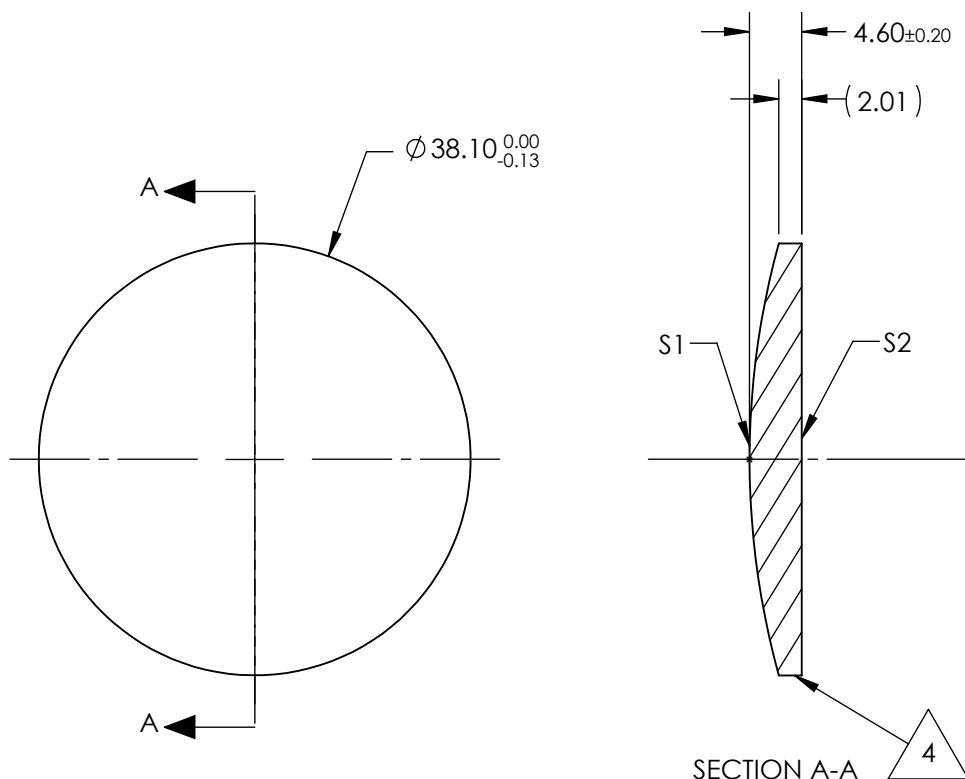


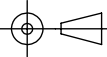
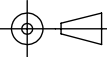
NOTES:

1. SUBSTRATE:  
Zinc Selenide (ZnSe), CVD Grade
2. CENTERING TOLERANCE:  
<3 ARCMIN
3. COATING (APPLY ACROSS CLEAR APERTURE)  
S1 & S2: NONE
4.  FINE GRIND SURFACE
5. FOCAL LENGTH TOLERANCE:  $\pm 2\%$
6. ROHS COMPLIANT



**FOR INFORMATION ONLY:  
DO NOT MANUFACTURE  
PARTS TO THIS DRAWING**

SPECIFICATIONS SUBJECT TO CHANGE WITHOUT NOTICE  
DIMENSIONS ARE FOR REFERENCE ONLY

	S1	S2	EFL @ 10.6 $\mu$ m	50.8	 <b>Edmund Optics®</b>		
SHAPE	CONVEX	PLANO	BFL @ 10.6 $\mu$ m	49.03			
RADIUS	71.46	INFINITY			TITLE	38.1mm Dia. x 50.8mm FL, Uncoated, ISP Optics ZnSe Plano-Convex Lens	
IRREGULARITY AT 10.6 $\mu$ m	$\lambda/20$	$\lambda/20$					
SURFACE QUALITY	60-40	60-40			DWG NO	24950	
CLEAR APERTURE	ø34.29	ø34.29					
BEVEL	PROTECTED AS NEEDED	PROTECTED AS NEEDED	ALL DIMS IN	mm			SHEET 1 OF 1