
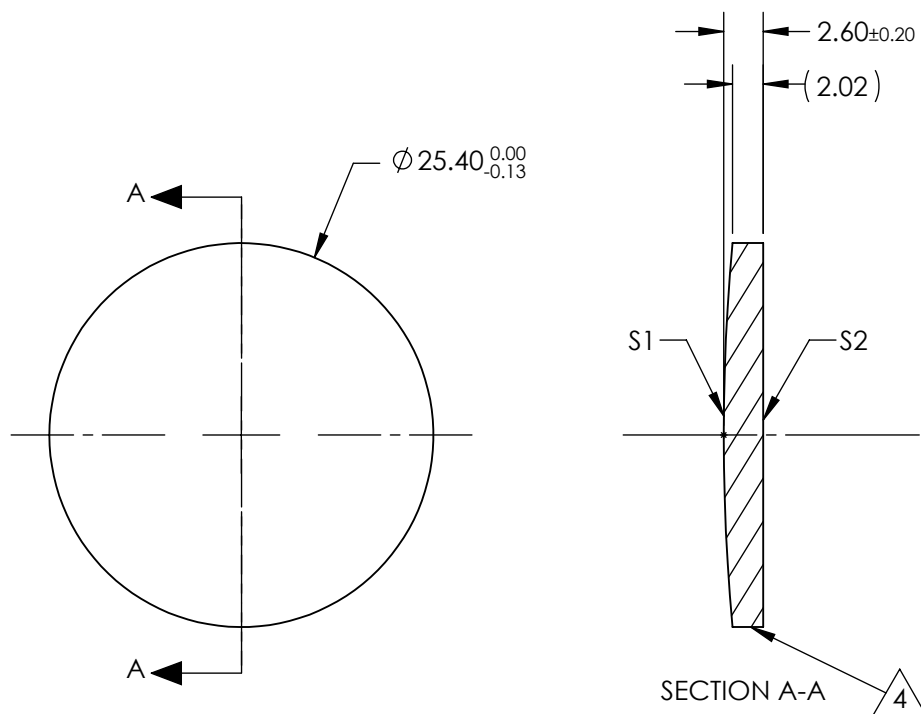



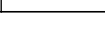
NOTES:

1. SUBSTRATE:
Zinc Selenide (ZnSe), CVD Grade
2. CENTERING TOLERANCE:
<3 ARCMIN
3. COATING (APPLY ACROSS CLEAR APERTURE)
S1 & S2: NONE
4.  FINE GRIND SURFACE
5. FOCAL LENGTH TOLERANCE: $\pm 2\%$
6. ROHS COMPLIANT



**FOR INFORMATION ONLY:
DO NOT MANUFACTURE
PARTS TO THIS DRAWING**

SPECIFICATIONS SUBJECT TO CHANGE WITHOUT NOTICE
DIMENSIONS ARE FOR REFERENCE ONLY

			EFL @ 10.6μm		100.0		DIMENSIONS ARE FOR REFERENCE ONLY					
SHAPE	S1	S2	BFL @ 10.6μm		98.7		 Edmund Optics®					
RADIUS	140	INFINITY			TITLE		25.4mm Dia. x 100mm FL, Uncoated, ISP Optics ZnSe Plano-Convex Lens					
IRREGULARITY AT 10.6μm	λ/20	λ/20										
SURFACE QUALITY	60-40	60-40										
CLEAR APERTURE	ø22.86	ø22.86	ALL DIMS IN		mm		DWG NO		24945		SHEET 1 OF 1	
BEVEL	PROTECTED AS NEEDED	PROTECTED AS NEEDED										