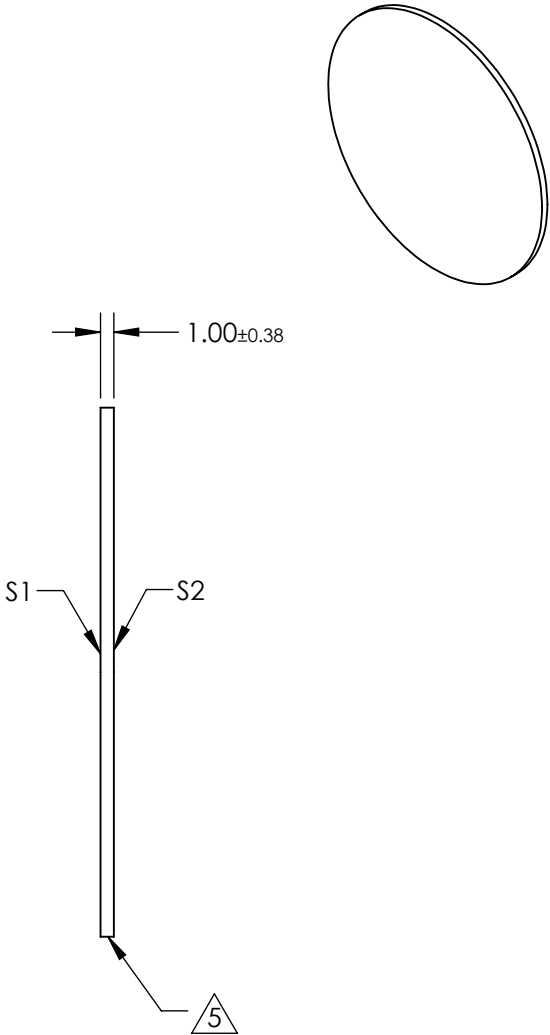
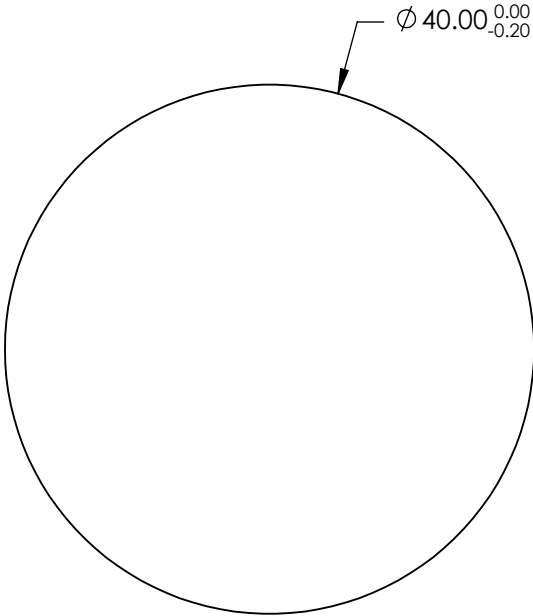


- NOTES:
- 1. SUBSTRATE: FUSED SILICA
  - 2. RoHS: COMPLIANT
  - 3. SURFACE S2 TO BE PARALLEL TO SURFACE S1 TO WITHIN <5 ARCMIN
  - 4. COATING (APPLY ACROSS CLEAR APERTURE)
    - S1 & S2: Rabs <0.25% @ 532nm
    - Rabs <0.25% @ 1064nm
    - Ravg <1.0% @ 500 - 1100nm

5. FINE GRIND SURFACE



**FOR INFORMATION ONLY:  
DO NOT MANUFACTURE  
PARTS TO THIS DRAWING**

SPECIFICATIONS SUBJECT TO CHANGE WITHOUT NOTICE  
DIMENSIONS ARE FOR REFERENCE ONLY

|                  | S1                  | S2                  |
|------------------|---------------------|---------------------|
| SHAPE            | PLANO               | PLANO               |
| SURFACE ACCURACY | 1λ                  | 1λ                  |
| SURFACE QUALITY  | 60 - 40             | 60 - 40             |
| CLEAR APERTURE   | Ø 36                | Ø 36                |
| BEVEL            | PROTECTED AS NEEDED | PROTECTED AS NEEDED |

THIRD ANGLE  
PROJECTION

ALL DIMS IN      mm

|  |  |   |                |
|--|--|---|----------------|
|  Edmund Optics® |  |   |                |
| TITLE  |  | 40mm Dia. 1mm Thick YAG-BBAR Coated, 1λ Fused Silica Window |                |
| DWG NO   |  | 25232   | SHEET 44 OF 52 |