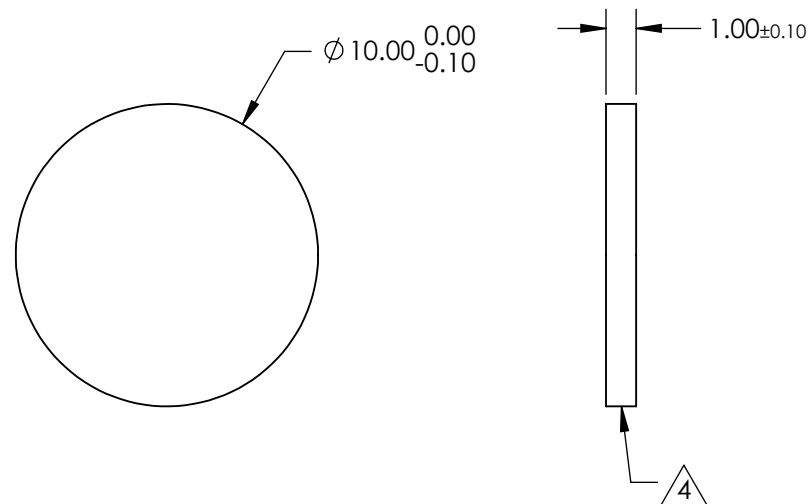
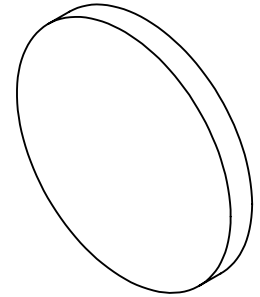


NOTES:



1. SUBSTRATE: Fused Silica (Corning 7980)
2. S2 TO BE PARALLEL WITH S1 TO WITHIN <1 ARCMIN
3. COATING (APPLY ACROSS CLEAR APERTURE)
S1 & S2: $R(\text{ABS}) \leq 1.5\%$ FROM 750 - 800nm
 $R(\text{ABS}) \leq 1.0\%$ FROM 800 - 1550nm
 $R(\text{AVG}) \leq 0.7\%$ FROM 750 - 1550nm
4. FINE GRIND SURFACE
5. ROHS COMPLIANT



**FOR INFORMATION ONLY:
DO NOT MANUFACTURE
PARTS TO THIS DRAWING**

SPECIFICATIONS SUBJECT TO CHANGE WITHOUT NOTICE
DIMENSIONS ARE FOR REFERENCE ONLY



	S1	S2					
SHAPE	PLANO	PLANO	<div>THIRD ANGLE PROJECTION </div>		TITLE	10mm Dia., 1mm Thick, NIR II Coated, $\lambda/4$ Fused Silica Window	
SURFACE QUALITY	40-20	40-20					
CLEAR APERTURE	\varnothing 9.00	\varnothing 9.00					
BEVEL	PROTECTED AS NEEDED	PROTECTED AS NEEDED	ALL DIMS IN	mm	DWG NO	25651	SHEET 15 OF 26