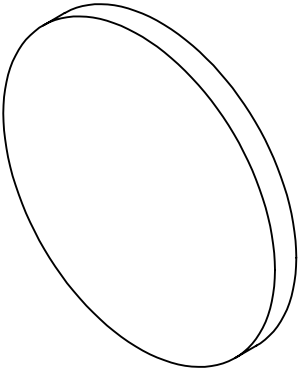
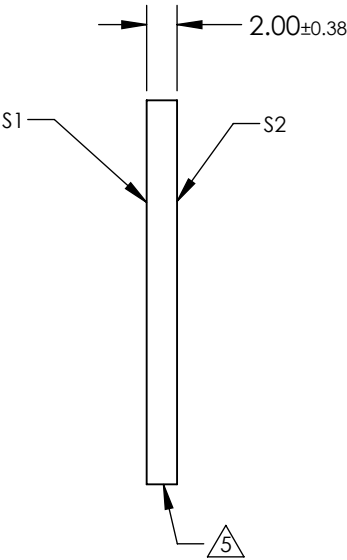
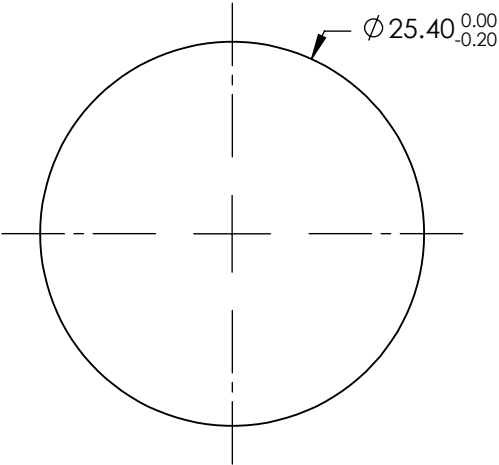


- NOTES:
1. SUBSTRATE: Fused Silica (Corning 7980)
 2. RoHS COMPLIANT
 3. SURFACE S2 TO BE PARALLEL WITH SURFACE S 1 TO WITHIN ACRMINS
 4. Coating (Apply Across Clear Aperture):
 S1 & S2: Rabs ≤1.0% @ 250 - 425nm
 Ravg ≤0.75% @ 250 - 425nm
 Ravg ≤0.5% @ 370 - 420nm




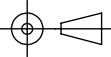
5. FINE GROUND SURFACE



FOR INFORMATION ONLY:
DO NOT MANUFACTURE
PARTS TO THIS DRAWING

SPECIFICATIONS SUBJECT TO CHANGE WITHOUT NOTICE
DIMENSIONS ARE FOR REFERENCE ONLY

	S1	S2
Shape	Plano	Plano
Surface Accuracy	1λ	1λ
Surface Quality	60-40	60-40
Clear Aperture	22.86	22.86
Bevel	Protected as Needed	Protected as Needed

 Edmund Optics®		25.4mm Dia. 2mm Thick UV-AR Coated, 1λ Fused Silica Window	
THIRD ANGLE PROJECTION 	TITLE	DWG NO	SHEET
ALL DIMS IN mm	25254	11 OF 101	