

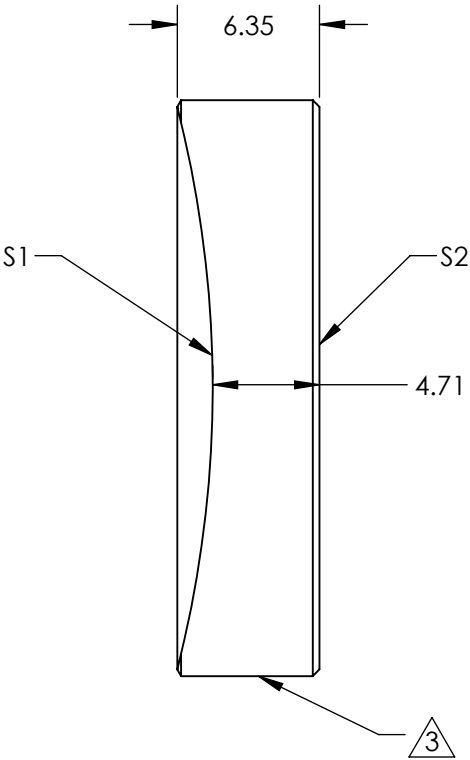
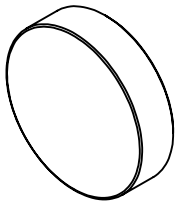
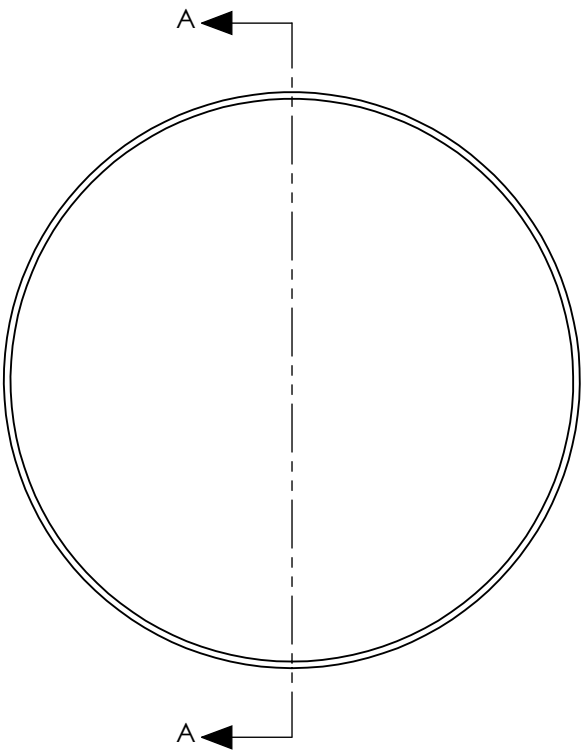
NOTES:
1. SUBSTRATE:
FUSED SILICA

2. COATING (APPLY ACROSS CLEAR APERTURE)

S1: Ravg ≥92% @ 190 - 250nm
Ravg ≥83% @ 250 - 900nm
S2: COMMERICAL POLISH

3. FINE GRIND SURFACE

4. ROHS COMPLIANT



**FOR INFORMATION ONLY:
DO NOT MANUFACTURE
PARTS TO THIS DRAWING**

SPECIFICATIONS SUBJECT TO CHANGE WITHOUT NOTICE
DIMENSIONS ARE FOR REFERENCE ONLY

	S1	S2
SHAPE	CONCAVE	PLANO
SURFACE QUALITY	20-10	N/A
COATING TYPE	METAL	N/A
COATING	Enhanced Aluminum (190-900nm)	N/A
BEVEL	PROTECTED AS NEEDED	PROTECTED AS NEEDED



ALL DIMS IN

mm

Edmund Optics®

TITLE

25.4mm Dia., 25mm FL, Enhanced Deep UV
(DUV) Spherical Mirror

DWG NO

24062

SHEET
1 OF 1