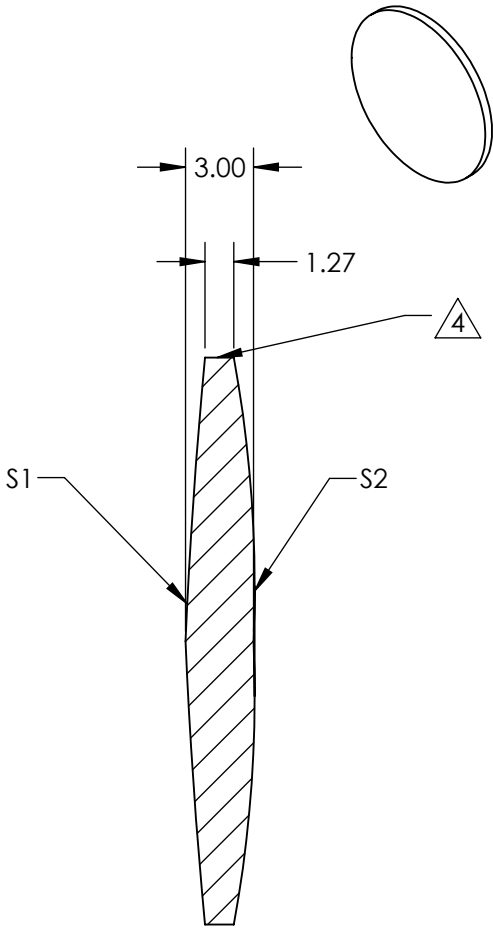
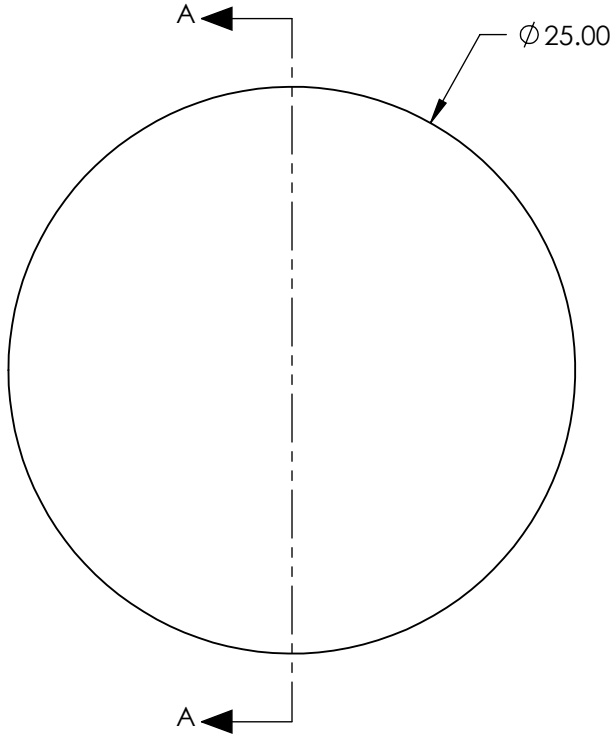


NOTES:

- 1. SUBSTRATE:
Fused Silica (or equivalent)
- 2. CENTERING TOLERANCE (AT 587.6nm): <1 ARCMIN
- 3. COATING (APPLY ACROSS CLEAR APERTURE)

S1&S2: NONE
- 4. FINE GRIND SURFACE (ADD INK NOTE AS NEEDED)
- 5. FOCAL LENGTH (EFL): 100mm
BACK FOCAL LENGTH (BFL): 98.31mm
- 6. ROHS COMPLIANT
- 7. PROTECTIVE BEVEL AS NEEDED
- 8. POWER, IRREGULARITY, AND SURFACE QUALITY
SPECIFICATIONS APPLY ACROSS CLEAR APERTURE
- 9. DESIGN WAVELENGTH: 587.6nm


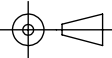


SECTION A-A

**FOR INFORMATION ONLY:
DO NOT MANUFACTURE
PARTS TO THIS DRAWING**

SPECIFICATIONS SUBJECT TO CHANGE WITHOUT NOTICE
DIMENSIONS ARE FOR REFERENCE ONLY

	S1	S2
SHAPE	PLANO	PLANO
RADIUS	253.56	55.76
SURFACE QUALITY	10-5	10-5
CLEAR APERTURE	Ø 22.5	Ø 22.5
BEVEL	PROTECTED AS NEEDED	PROTECTED AS NEEDED

 Edmund Optics®			
THIRD ANGLE PROJECTION 		TITLE	LENS DCX BF 25 X 100 UNCTD TS
ALL DIMS IN	mm	DWG NO	22572
			SHEET 8 OF 8