
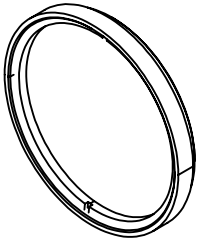
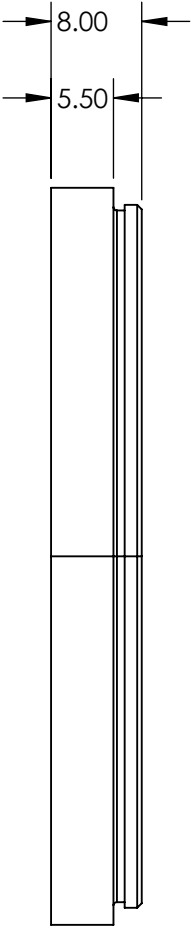
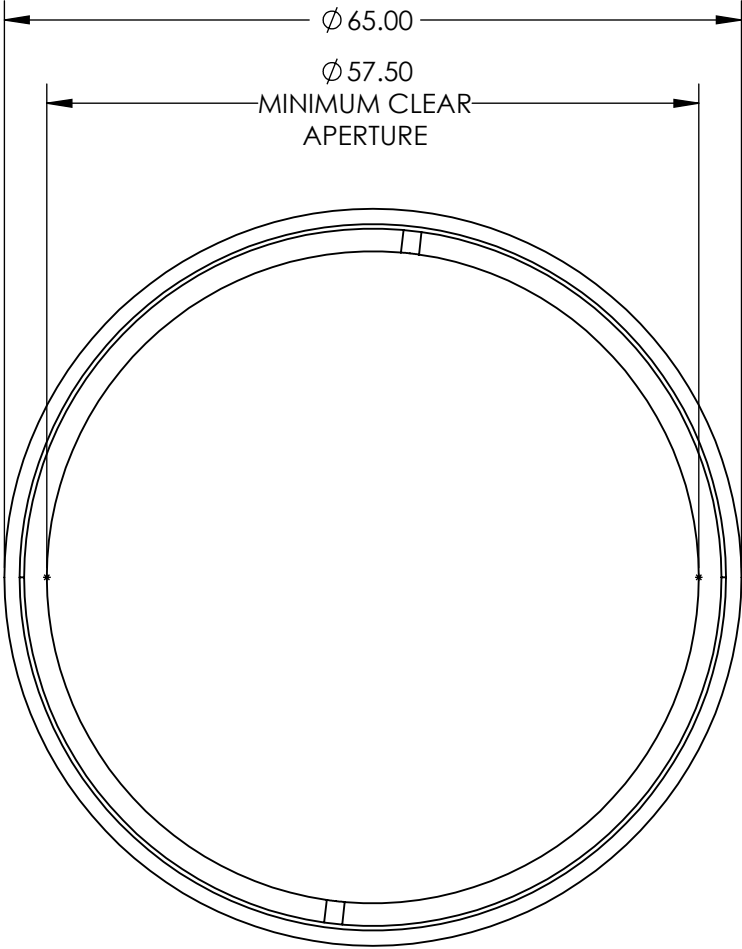


NOTES:

- 1. SUBSTRATE:  
SAPPHIRE (Al<sub>2</sub>O<sub>3</sub>)
- 2. SURFACE S2 TO BE PARALLEL WITH SURFACE S1 TO  
WITHIN 3.5 ARCMIN
- 3. COATING (APPLY ACROSS CLEAR APERTURE)  
S1 & S2: NONE
- 4.  FINE GRIND SURFACE (ADD INK NOTE AS NEEDED)
- 5. POWER, IRREGULARITY, AND SURFACE QUALITY  
SPECIFICATIONS APPLY ACROSS CLEAR APERTURE
- 6. ROHS COMPLIANT



**FOR INFORMATION ONLY:  
DO NOT MANUFACTURE  
PARTS TO THIS DRAWING**

SPECIFICATIONS SUBJECT TO CHANGE WITHOUT NOTICE  
DIMENSIONS ARE FOR REFERENCE ONLY

	S1	S2
SHAPE	PLANO	PLANO
CLEAR APERTURE	Ø 53.3	Ø 53.3
SURFACE FLATNESS	2λ	2λ
SURFACE ROUGHNESS	0.1 MICRONS PER INCH	0.1 MICRONS PER INCH
SURFACE QUALITY	80-50	80-50
BIREFRINGENCE (no-ne)	0.008	0.008
BEVEL	PROTECTED AS NEEDED	PROTECTED AS NEEDED



ALL DIMS IN mm

 **Edmund Optics®**

TITLE Machine Vision Mounted 59.2mm Dia., 1.5mm  
Thick, Uncoated, Sapphire Window

DWG NO 23289 SHEET 1 OF 1