

NOTES:

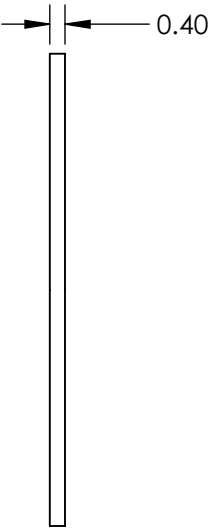
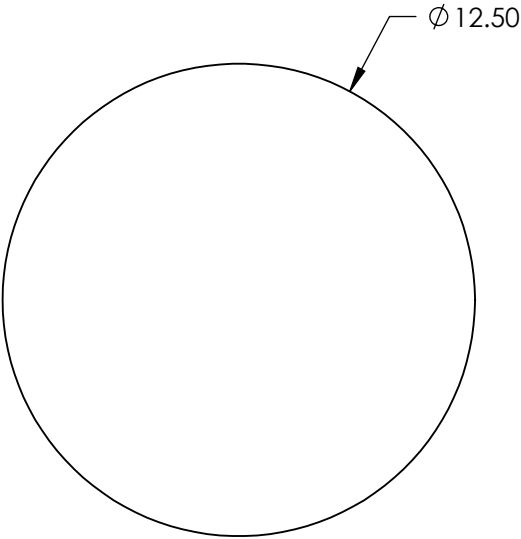
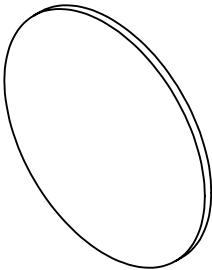
1. COATING

PERFORMANCE SPECIFICATIONS:

CWL: 1064nm
TRANSMISSION %: >85

2. POWER, IRREGULARITY, AND SURFACE QUALITY SPECIFICATIONS
APPLY ACROSS CLEAR APERTURE

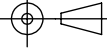
3. ROHS COMPLIANT



**FOR INFORMATION ONLY:
DO NOT MANUFACTURE
PARTS TO THIS DRAWING**

SPECIFICATIONS SUBJECT TO CHANGE WITHOUT NOTICE
DIMENSIONS ARE FOR REFERENCE ONLY

EO® **Edmund Optics®**

	S1	S2	THIRD ANGLE PROJECTION 		TITLE	Everix Ultra-Thin OD 4 Notch Filter, 1064nm, 12.5mm Diameter	
SHAPE	PLANO	PLANO	ALL DIMS IN	mm	DWG NO	23686	SHEET 15 OF 15
CLEAR APERTURE	Ø 11.25	Ø 11.25					