

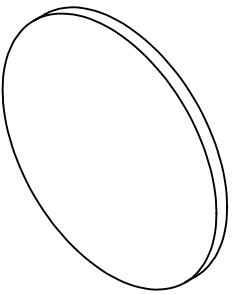
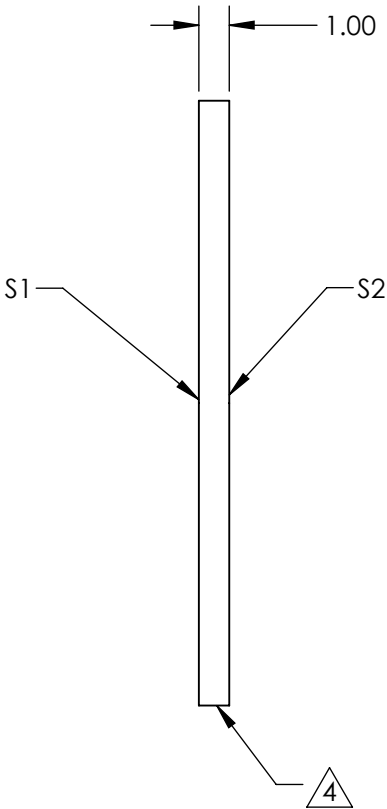
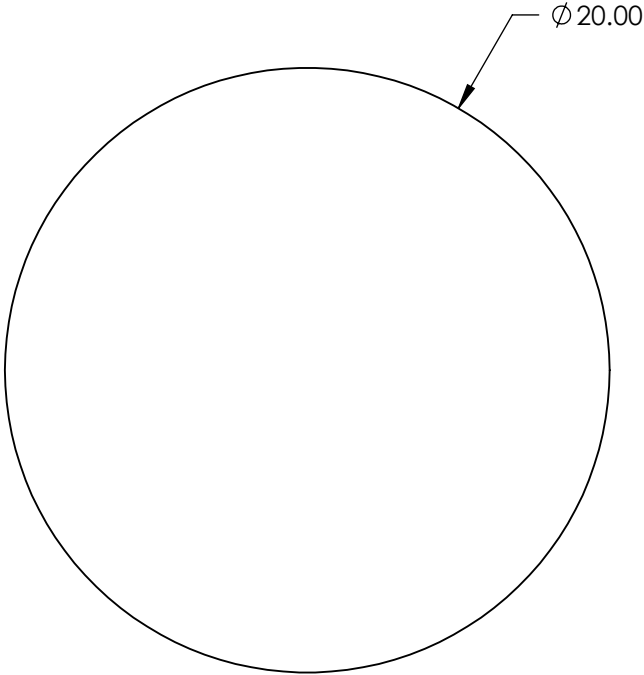
NOTES:

- 1. SUBSTRATE: N-BK7
- 2. S2 TO BE PARALLEL WITH S1 TO <1 ARCMIN
- 3. COATING (APPLY ACROSS CLEAR APERTURE)

S1: NIR I (600-1050nm)
S2: NIR I (600-1050nm)
Ravg ≤0.5% @ 600 - 1050nm

4. FINE GRIND SURFACE

- 5. ROHS COMPLIANT



**FOR INFORMATION ONLY:
DO NOT MANUFACTURE
PARTS TO THIS DRAWING**

SPECIFICATIONS SUBJECT TO CHANGE WITHOUT NOTICE
DIMENSIONS ARE FOR REFERENCE ONLY

	S1	S2
SHAPE	PLANO	PLANO
SURFACE QUALITY	60-40	60-40
CLEAR APERTURE	Ø 18.00	Ø 18.00
BEVEL	PROTECTED AS NEEDED	PROTECTED AS NEEDED



ALL DIMS IN mm

Edmund Optics®

TITLE

20mm Dia., 1mm Thick, NIR I Coated λ/4
N-BK7 Window

DWG NO

23427

SHEET
49 OF 84