

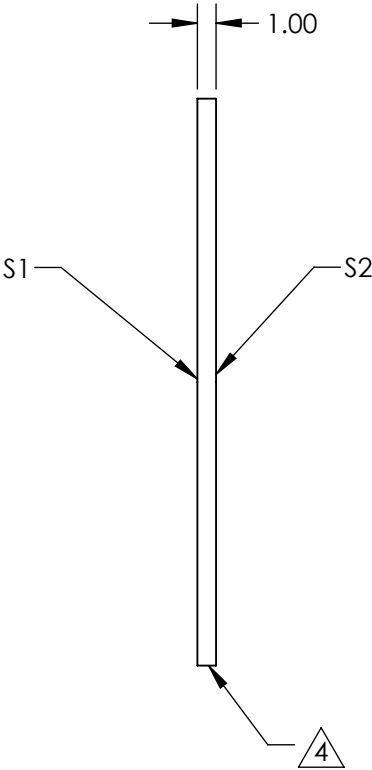
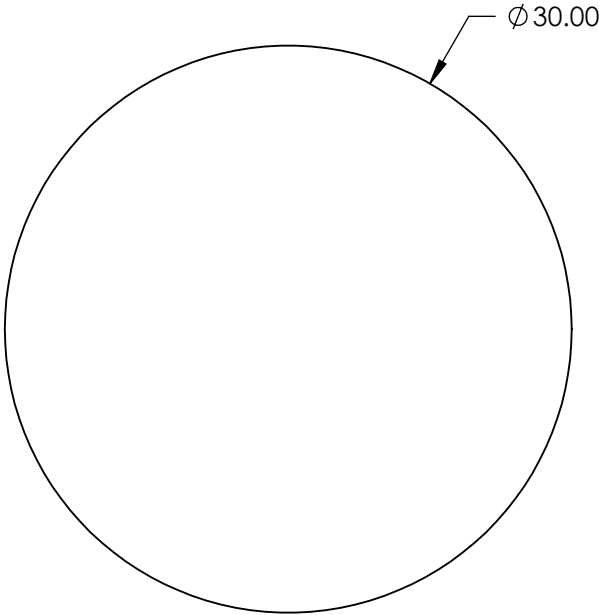
NOTES:

- 1. SUBSTRATE: N-BK7
- 2. S2 TO BE PARALLEL WITH S1 TO <1 ARCMIN
- 3. COATING (APPLY ACROSS CLEAR APERTURE)

S1: VIS-NIR (400-1000nm)  
S2: VIS-NIR (400-1000nm)  
Rabs ≤0.25% @ 880nm Ravg ≤1.25% @ 400 - 870 nm Ravg ≤1.25% @ 890 - 1000nm

4. FINE GRIND SURFACE

- 5. ROHS COMPLIANT



**FOR INFORMATION ONLY:**  
**DO NOT MANUFACTURE**  
**PARTS TO THIS DRAWING**

SPECIFICATIONS SUBJECT TO CHANGE WITHOUT NOTICE  
DIMENSIONS ARE FOR REFERENCE ONLY

|                 | S1                  | S2                  |
|-----------------|---------------------|---------------------|
| SHAPE           | PLANO               | PLANO               |
| SURFACE QUALITY | 60-40               | 60-40               |
| CLEAR APERTURE  | Ø 27.00             | Ø 27.00             |
| BEVEL           | PROTECTED AS NEEDED | PROTECTED AS NEEDED |



ALL DIMS IN mm

**Edmund Optics®**

TITLE

30mm Dia., 1mm Thick, VIS-NIR Coated  
λ/4 N-BK7 Window

DWG NO

23408

SHEET  
38 OF 84