

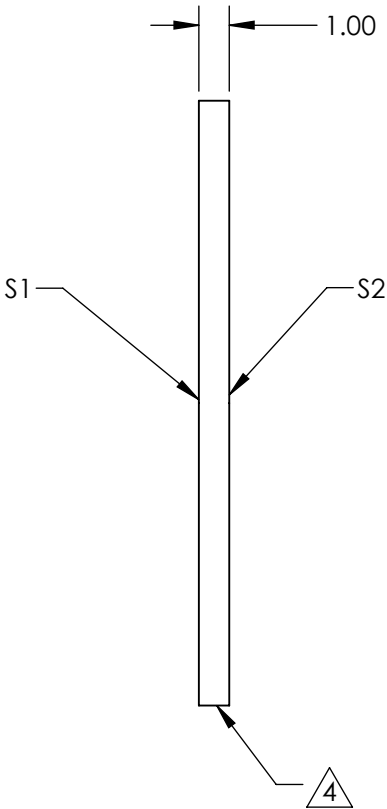
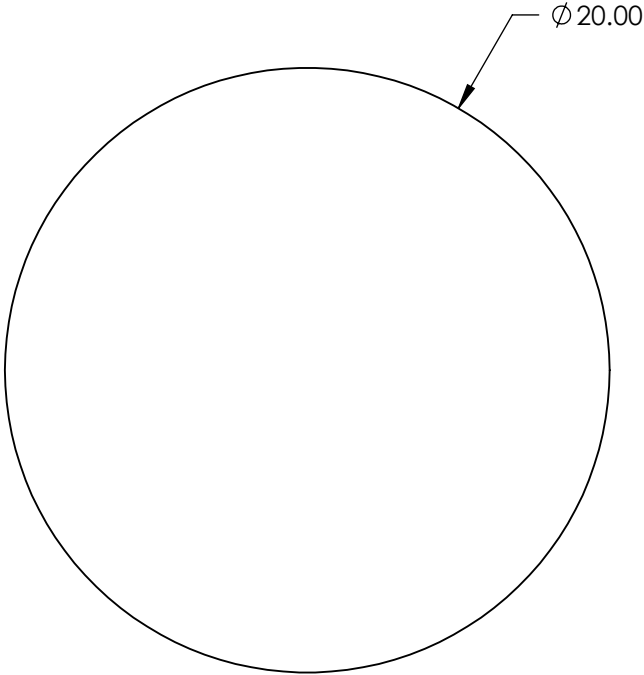
NOTES:

- 1. SUBSTRATE: N-BK7
- 2. S2 TO BE PARALLEL WITH S1 TO <1 ARCMIN
- 3. COATING (APPLY ACROSS CLEAR APERTURE)

S1: VIS-NIR (400-1000nm)  
S2: VIS-NIR (400-1000nm)  
Rabs ≤0.25% @ 880nm Ravg ≤1.25% @ 400 - 870 nm Ravg ≤1.25% @ 890 - 1000nm

4. FINE GRIND SURFACE

- 5. ROHS COMPLIANT



**FOR INFORMATION ONLY:  
DO NOT MANUFACTURE  
PARTS TO THIS DRAWING**

SPECIFICATIONS SUBJECT TO CHANGE WITHOUT NOTICE  
DIMENSIONS ARE FOR REFERENCE ONLY

	S1	S2
SHAPE	PLANO	PLANO
SURFACE QUALITY	60-40	60-40
CLEAR APERTURE	Ø 18.00	Ø 18.00
BEVEL	PROTECTED AS NEEDED	PROTECTED AS NEEDED



ALL DIMS IN mm

**Edmund Optics®**

TITLE

20mm Dia., 1mm Thick, VIS-NIR Coated  
λ/4 N-BK7 Window

DWG NO

23405

SHEET  
35 OF 84