

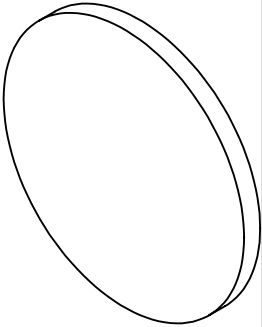
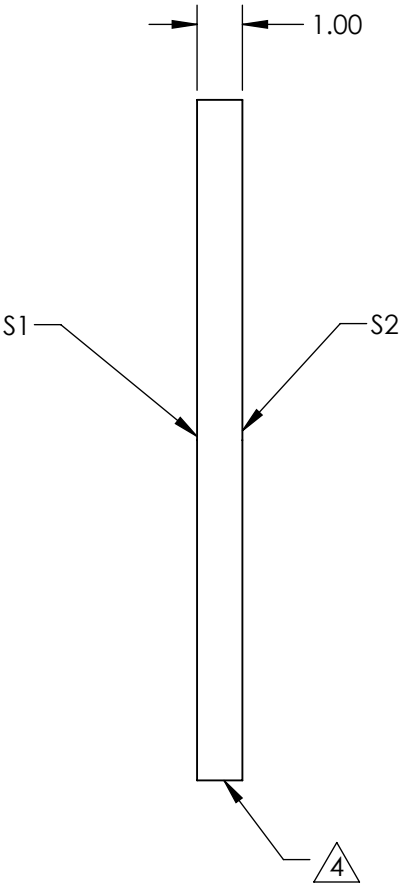
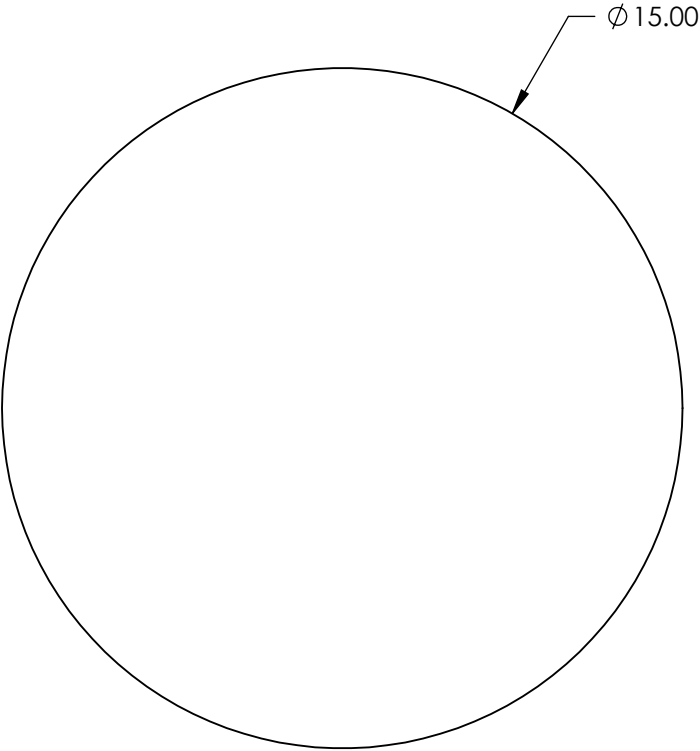
NOTES:

- 1. SUBSTRATE: N-BK7
- 2. S2 TO BE PARALLEL WITH S1 TO <1 ARCMIN
- 3. COATING (APPLY ACROSS CLEAR APERTURE)

S1: VIS-NIR (400-1000nm)
S2: VIS-NIR (400-1000nm)
Rabs ≤0.25% @ 880nm Ravg ≤1.25% @ 400 - 870 nm Ravg ≤1.25% @ 890 - 1000nm

4. FINE GRIND SURFACE

5. ROHS COMPLIANT

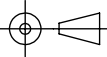


FOR INFORMATION ONLY:
DO NOT MANUFACTURE
PARTS TO THIS DRAWING

SPECIFICATIONS SUBJECT TO CHANGE WITHOUT NOTICE
DIMENSIONS ARE FOR REFERENCE ONLY

	S1	S2
SHAPE	PLANO	PLANO
SURFACE QUALITY	60-40	60-40
CLEAR APERTURE	Ø 13.50	Ø 13.50
BEVEL	PROTECTED AS NEEDED	PROTECTED AS NEEDED

THIRD ANGLE
PROJECTION



ALL DIMS IN

mm



Edmund Optics®

TITLE

15mm Dia., 1mm Thick, VIS-NIR Coated
λ/4 N-BK7 Window

DWG NO

23404

SHEET
34 OF 84