

NOTES:

1. CONSTRUCTION: MOUNTED IN BLACK ANODIZED RING
2. COATING (APPLY ACROSS COATING APERTURE)

DURABILITY: MIL-C-48497A

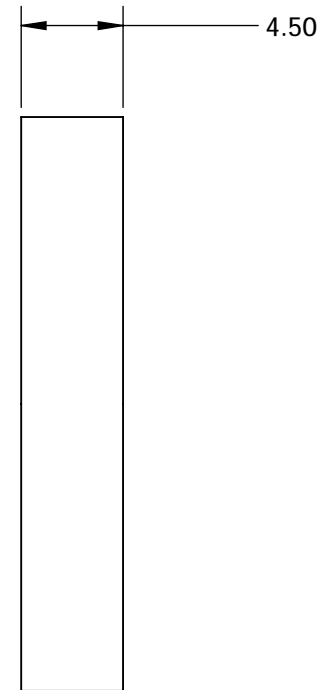
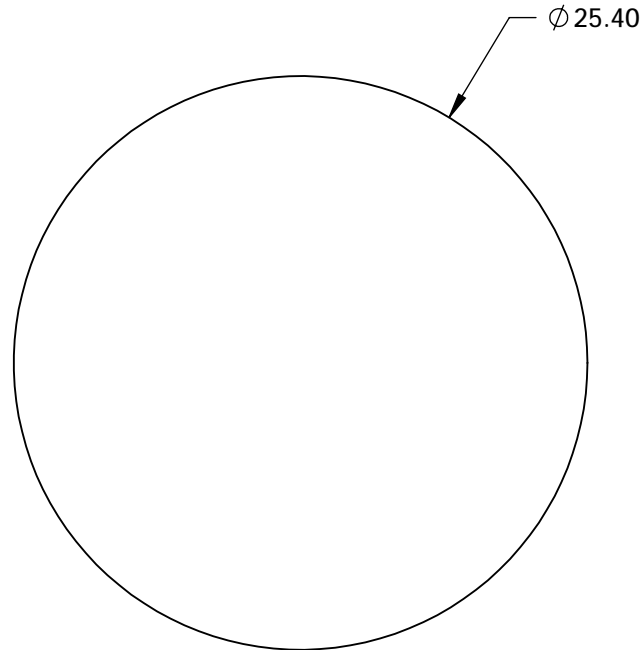
PERFORMANCE SPECIFICATIONS:

CWL: 635

FWHM: 16 NOMINAL

TRANSMISSION %: 94% (400-600nm); 96% (675-750)


3. POWER, IRREGULARITY, AND SURFACE QUALITY SPECIFICATIONS APPLY ACROSS CLEAR APERTURE
4. TRANSMITTED WAVEFRONT DISTORTION RMS@ $<1\lambda$
5. ROHS COMPLIANT



**FOR INFORMATION ONLY:
DO NOT MANUFACTURE
PARTS TO THIS DRAWING**

SPECIFICATIONS SUBJECT TO CHANGE WITHOUT NOTICE
DIMENSIONS ARE FOR REFERENCE ONLY

 Edmund Optics®

	S1	S2	THIRD ANGLE PROJECTION 		TITLE	635nm 25.4mm META® holoOPTIX® STRATA Notch Filter	
SHAPE	PLANO	PLANO			DWG NO	23029	SHEET 3 OF 3
SURFACE QUALITY	60-40	60-40					
CLEAR APERTURE	Ø 20.00	Ø 20.00	ALL DIMS IN	mm			