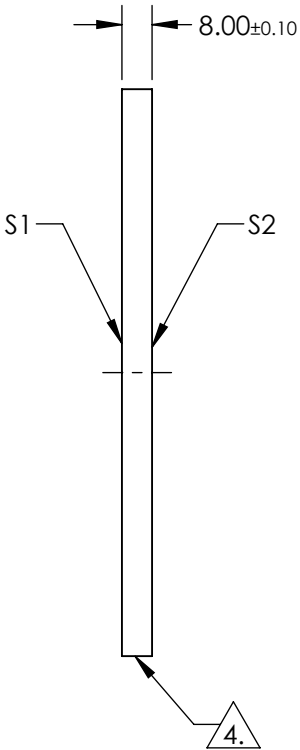
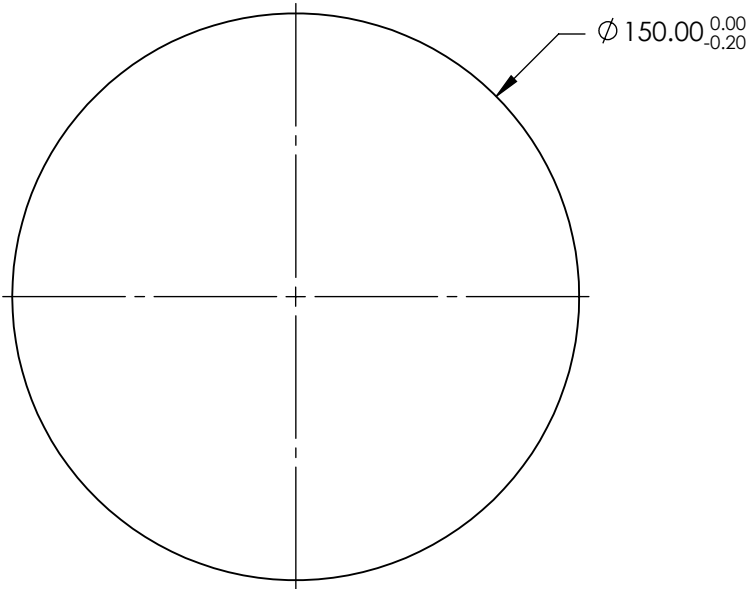


NOTES:

- 1. SUBSTRATE: FUSED SILICA (CORNING 7980)
- 2. COATING (APPLY ACROSS CLEAR APERTURE)
S1 & S2: R(ABS) ≤0.25% @ 880nm
R(AVG) ≤1.25% FROM 400 - 870nm
R(AVG) ≤1.25% FROM 890 - 1000nm
- 3. SURFACE S1 TO BE PARALLEL WITH SURFACE S2 TO WITHIN < 10 ARCSEC

4. FINE GRIND SURFACE

- 5. ROHS COMPLIANT




**FOR INFORMATION ONLY:
DO NOT MANUFACTURE
PARTS TO THIS DRAWING**

SPECIFICATIONS SUBJECT TO CHANGE WITHOUT NOTICE
DIMENSIONS ARE FOR REFERENCE ONLY

	S1	S2
SHAPE	PLANO	PLANO
SURFACE QUALITY	40-20	40-20
CLEAR APERTURE	Ø 135.00	Ø 135.00
BEVEL	PROTECTED AS NEEDED	PROTECTED AS NEEDED

THIRD ANGLE
PROJECTION

ALL DIMS IN mm

 **Edmund Optics®**

TITLE	150mm Dia., 8mm Thick, VIS-NIR Coated λ/10 Fused Silica Window		
DWG NO	22072	SHEET 1 OF 1	