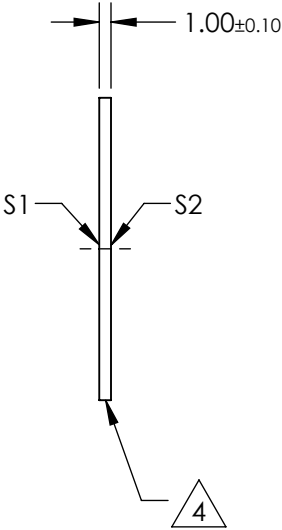
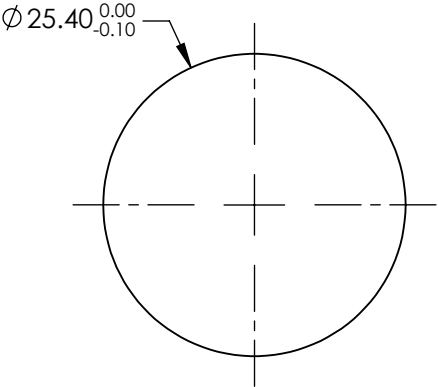


NOTES:


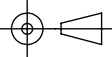
- 1. SUBSTRATE:
VACUUM UV GRADE CaF2
- 2. SURFACE S2 TO BE PARALLEL WITH S1 TO < 1 ARCMIN
- 3. COATING (APPLY ACROSS CLEAR APERTURE)
S1 & S2: R(ABS) ≤ 1.5% FROM 750-800nm @ 0° AOI
R(ABS) ≤ 1.0% FROM 800-1550nm @ 0° AOI
R(AVG) ≤ 0.7% FROM 750-1550nm @ 0° AOI

4. FINE GRIND SURFACE



**FOR INFORMATION ONLY:
DO NOT MANUFACTURE
PARTS TO THIS DRAWING**

SPECIFICATIONS SUBJECT TO CHANGE WITHOUT NOTICE
DIMENSIONS ARE FOR REFERENCE ONLY

| | S1 | S2 |  Edmund Optics® | | | |
|------------------|----------------------|----------------------|------------------------------------------------------------------------------------------------------|--------|-------------------------------------------------------------------|-----------------|
| SHAPE | PLANO | PLANO |  | TITLE | 25.4mm Dia., 1mm Thick, NIR II Coated, Calcium Fluoride Window | |
| SURFACE FLATNESS | λ | λ | | DWG NO | 22607 | SHEET 1 OF 1 |
| SURFACE QUALITY | 40-20 | 40-20 | | | | |
| CLEAR APERTURE | Ø22.86 | Ø22.86 | | | | |
| BEVEL | PROTECTIVE AS NEEDED | PROTECTIVE AS NEEDED | | | | |
| | | | ALL DIMS IN | mm | | |