

NOTES:

1. SUBSTRATE: UV Grade MgF2
2. SURFACE S2 TO BE PARALLEL WITH SURFACE S1 TO WITHIN 1 ARCMIN
3. COATING (APPLY ACROSS CLEAR APERTURE)

OPTICAL DENSITY = 0.5 +0.10/-0.05 FROM 120 - 200nm

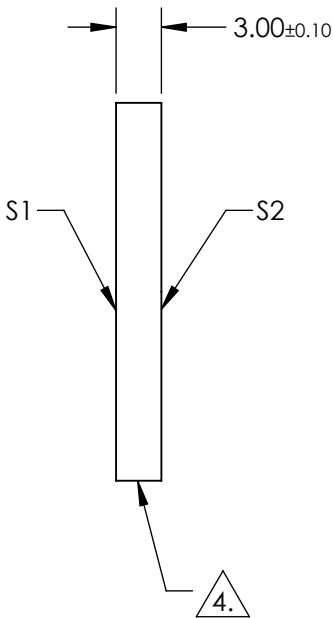
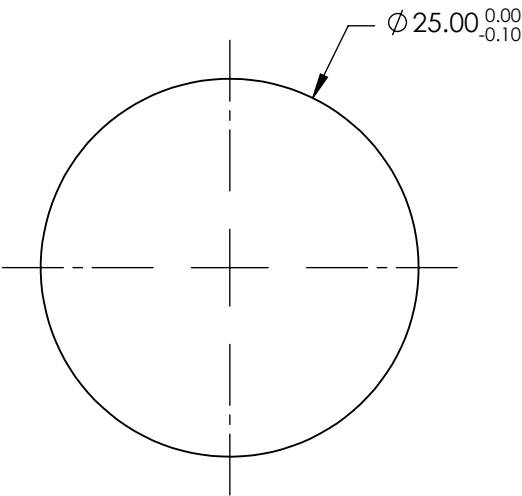
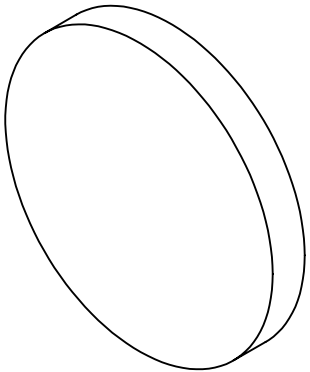
S1: COATED
S2: UNCOATED

**FOR INFORMATION ONLY:
DO NOT MANUFACTURE
PARTS TO THIS DRAWING**

4. FINE GRIND SURFACE (ADD INK NOTE AS NEEDED)

5. POWER, IRREGULARITY, AND SURFACE QUALITY SPECIFICATIONS
APPLY ACROSS CLEAR APERTURE

6. TRANSMITTED WAVEFRONT DISTORTION P-V @ 632.8nm: $\lambda/4$



SPECIFICATIONS SUBJECT TO CHANGE WITHOUT NOTICE
DIMENSIONS ARE FOR REFERENCE ONLY

	S1	S2
SHAPE	PLANO	PLANO
SURFACE QUALITY	40-20	40-20
CLEAR APERTURE	Ø 20	Ø 20
COATING APERTURE	Ø 20	Ø 20
BEVEL	PROTECTED AS NEEDED	PROTECTED AS NEEDED

THIRD ANGLE PROJECTION		TITLE	
ALL DIMS IN		DWG NO	
mm		20134	
Edmund Optics®		0.5 OD 25mm Diameter VUV ND Filter	
		SHEET 1 OF 1	